



PSU BUSINESS ACCELERATOR

- Oldest and largest incubator in Oregon
- A community: 25-30 companies with 200+ employees on site
- Blend of technology (software/hardware), cleantech and bioscience
- Strength in diversity; critical mass = critical to our success
- Formal + informal learning and gathering opportunities





ACCELERATOR AT A GLANCE

- Founded in 2004
- 30 resident biotech, cleantech & tech companies
- Spinouts from PSU, OHSU, OSU and private sector
- Companies raised \$150M in 7 years (mostly angel/VC)
- Employs 225+



The Accelerator is proud to be a Global Top 25 University Business Incubator on the 2014 UBI Index, one of only 3 in the U.S. to earn this worldwide ranking.



OUR MODEL INCREASES THE ODDS OF SUCCESS FOR STARTUPS

The Accelerator increases the odds of success for startups with:

- 40,000 sq. ft. office & lab space
- Turnkey facility with flexible lease terms
- Resources, connections, introductions, expertise
- Access to PSU resources – student teams, faculty, interns, hires
- Coaching, boot camps, pitch practice
- Growth focused, entrepreneurial peer community of 200+
- 63% are still in business since 2004

Result – 4x more likely to succeed!

Over the past 10 years, 40% of companies who won funding at Angel Oregon were Accelerator residents. Angel Oregon is Oregon's largest Angel competition run by the Oregon Entrepreneurs Network.





SUCCESSSES



- **Giftango (InComm).** Giftango joined the Accelerator in 2009, graduated in 2011, and was acquired in late 2012 by InComm for ~\$50m. They grew from 3 founders to 60 employees who remain located in Portland after acquisition. In addition, Giftango was a Finalist for “Outstanding Incubator Graduate” at the 2014 National Business Incubation Association annual conference.



- **Jama Software.** Jama joined the Accelerator in 2006 and graduated in early 2009 with 10 employees. Now Jama employs over 100 people in Portland with \$9m revenue in 2013 and \$13m private funding raised. Jama was able to bootstrap through their entire time at the Accelerator and only raised private capital in 2013 to support their rapid growth.



- **OpenSesame.** Our most recent graduate, OpenSesame joined in late 2010 as a spin-out of our anchor tenant, BlueVolt, and graduated in January 2014 with 25 employees and \$8m raised.



- **Jive** (Nasdaq: JIVE) is one of our earliest residents from 2005, and they have since raised \$575m before their IPO in 2011, have revenues of \$145m in 2013 and over 750 employees in multiple locations.



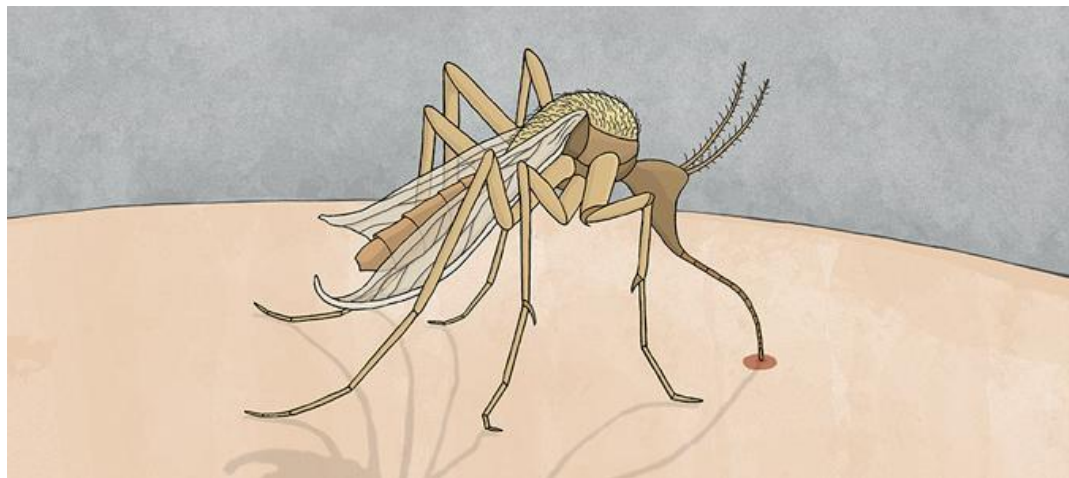
APDM



- 2007 PSU spinout with 17 employees
- Developed wearable, wireless sensors for tracking human movement
- Awarded STTR grants for technology application to Parkinson's
- Sensors being used to evaluate and US diving team

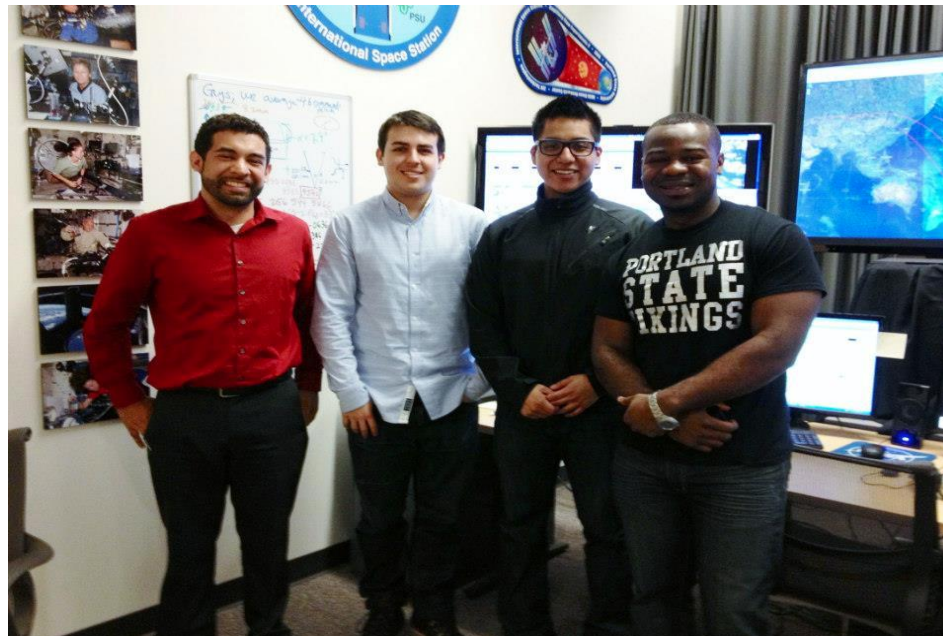


- 2006 PSU spinout with 7 employees
- Targeting drug-resistant diseases with novel dual-action drugs
- Winner of 2009 Angel Oregon
- Recipient of NIH SBIR and STTR awards for applications in combating malaria





eCLUB





THE PORTLAND ECOSYSTEM

Compulsively Collaborative!





AWARDS



- SBA Growth Acceleration Fund (2014)



- Global Top 25 University Business Incubator, UBI Index (2014)



- Semi-Finalist, Graduate of the Year (2014)



QUESTIONS? / **CONTACT**

Angela Jackson
Director, PSU Center for Entrepreneurship

503-725-2312

angela.jackson@pdx.edu

2828 SW Corbett Ave.
Portland, OR 97201

pdx.edu/entrepreneurship
@abjackson
@startitpdx
@pdxseedfund

