

## University of Oregon

### Retention & Graduation Rates

Fall First-Time, Full-Time Freshman Cohorts\*

All First-Time, Full-Time Freshmen					
Cohort Year	Cohort #	1st Year Retention	4 Year Graduation	5 Year Graduation	6 Year Graduation
1999-00	2,375	80.9%	38%	59%	64%
2000-01	2,719	81.9%	39%	59%	64%
2001-02	2,944	83.3%	41%	61%	66%
2002-03	3,208	82.5%	41%	62%	66%
2003-04	2,781	85.1%	46%	66%	70%
2004-05	3,039	83.7%	44%	64%	68%
2005-06	3,011	83.3%	41%	62%	67%
2006-07	3,211	84.1%	44%	64%	68%
2007-08	3,322	83.0%	43%	63%	67%
2008-09	4,137	83.4%	46%	66%	69%
2009-10	3,724	85.8%	50%	68%	
2010-11	3,845	86.2%	50%		
2011-12	4,021	84.8%			
2012-13	3,943	86.7%			
2013-04	3,913	87.2%			

### National Graduation Rates

Public	32.0%	56.5%
Private, non-profit	51.9%	65.1%
Private, for profit	35.4%	42.0%

Source: UO Office of Institutional Research

\*Freshmen from high school enrolled in at least 12 credit hours at the end of the 4th week of their first Fall term.

Pell Eligible First-Time, Full-Time Freshmen**				
Cohort Year	Cohort #	4 Year Graduation	5 Year Graduation	6 Year Graduation
2005-06	527	33%	56%	61%
2006-07	528	33%	55%	60%
2007-08	563	31%	51%	56%
2008-09	619	40%	60%	64%

\*\*Pell-Eligible in first fall term of attendance.

Middle and high incomes are not standard definitions. Universities do not routinely report graduation rates for these categories. Oregon State University could create a version of the categories, but such definitions would likely vary across institutions.

## Default Rates

3 year official		
	2011	5.8
	2010	5.7
	2009	4.5
2 year official		
	2011	4.4
	2010	2.9
	2009	2.2
	2008	1.9
	2007	2.0
	2006	1.9
	2005	1.4
	2004	1.8
	2003	2.0
	2002	2.5
	2001	3.1
	2000	3.1
	1999	3.3
	1998	4.0
	1997	6.1
	1996	5.0
	1995	5.3
	1994	4.8
	1993	5.5

### Explanation of Default Rate Reporting:

On October 28, 2009, the U.S. Department of Education (Department) published in the Federal Register the regulations enacted by the Higher Education Opportunity Act of 2009 that will govern the calculation of cohort default rates. Under the new provisions, an institution's cohort default rate is calculated as the percentage of borrowers in the cohort who default before the end of the second fiscal year following the fiscal year in which the borrowers entered repayment. This extends the length of time in which a student can default from two to three years. There is a transition point where we move from the 2-year rate to the 3-year rate. We need to present the information in such a way that it's not misinterpreted as a sudden increase, just because we extend the time during which default is evaluated (although there is a jump with the recession, even within each rate.)

## Operating Margins

The UO is not projecting a significant operating margin for FY2015. Projected revenue is expected to just cover projected expenses. At the end of FY14, however, we did have positive unrestricted net assets (UNA) on our balance sheet. Our E&G fund balance in BANNER at the end of FY14 was \$77.3 million which represents 17.3% of total E&G revenues. Once all liabilities (e.g., compensated absences, pension liabilities, etc.) were accounted for, however, this balance dropped to \$49.1 million or 11% of total E&G revenues. It's important to note that our level of UNA compared to operating expenses is very low compared to other state flagship institutions. The UNA of the University of Oregon represents approximately seven weeks of operating expenses. The average level of UNA for other public flagship institutions across the country is fifteen weeks. The positive E&G balance comes from a number of sources including tuition and fees, F&A return on federal grants, sales and service revenue, etc.

## UO Undergraduate Class Size

Class Size		2-9	10-19	20-29	30-39	40-49	50-99	100+	Total
Fall 2014	Class Sections	177	507	374	177	83	197	136	1651
	Class Sub-sections	116	405	497	65	34	10		1127
Fall 2013	Class Sections	182	447	402	205	71	196	141	1644
	Class Sub-sections	90	365	558	60	9	26		1108
Fall 2012	Class Sections	287	575	508	254	89	182	147	2042
	Class Sub-sections	89	373	572	62	13	16	1	1126
Fall 2011	Class Sections	244	484	568	246	94	191	139	1966
	Class Sub-sections	82	317	568	51	20	16		1054
Fall 2010	Class Sections	261	439	586	217	81	184	139	1907
	Class Sub-sections	61	310	550	45	6	18		990

Source: UO Institutional Research

**Class Sections:** A class section is an organized course offered for credit, identified by discipline and number, meeting at a stated time or times in a classroom or similar setting, and not a subsection such as a laboratory or discussion session. Undergraduate class sections are defined as any sections in which at least one degree-seeking undergraduate student is enrolled for credit. Exclude distance learning classes and noncredit classes and individual instruction such as dissertation or thesis research, music instruction, or one-to-one readings. Exclude students in independent study, co-operative programs, internships, foreign language taped tutor sessions, practicums, and all students in one-on-one classes. Each class section should be counted only once and should not be duplicated because of course catalog cross-listings.

**Class Subsections:** A class subsection includes any subsection of a course, such as laboratory, recitation, and discussion subsections that are supplementary in nature and are scheduled to meet separately from the lecture portion of the course. Undergraduate subsections are defined as any subsections of courses in which degree-seeking undergraduate students enrolled for credit. As above, exclude noncredit classes and individual instruction such as dissertation or thesis research, music instruction, or one-to-one readings. Each class subsection should be counted only once and should not be duplicated because of cross-listings.

## University of Oregon

### Senior Survey — Undergraduate Outcomes

- Attending graduate or professional school:
  - 14.5%
- Is your position related to your undergraduate field of study?
  - 71.2%
- How many internships or professionally related experiences have you completed while attending the UO:
  - At least one: 72.6%

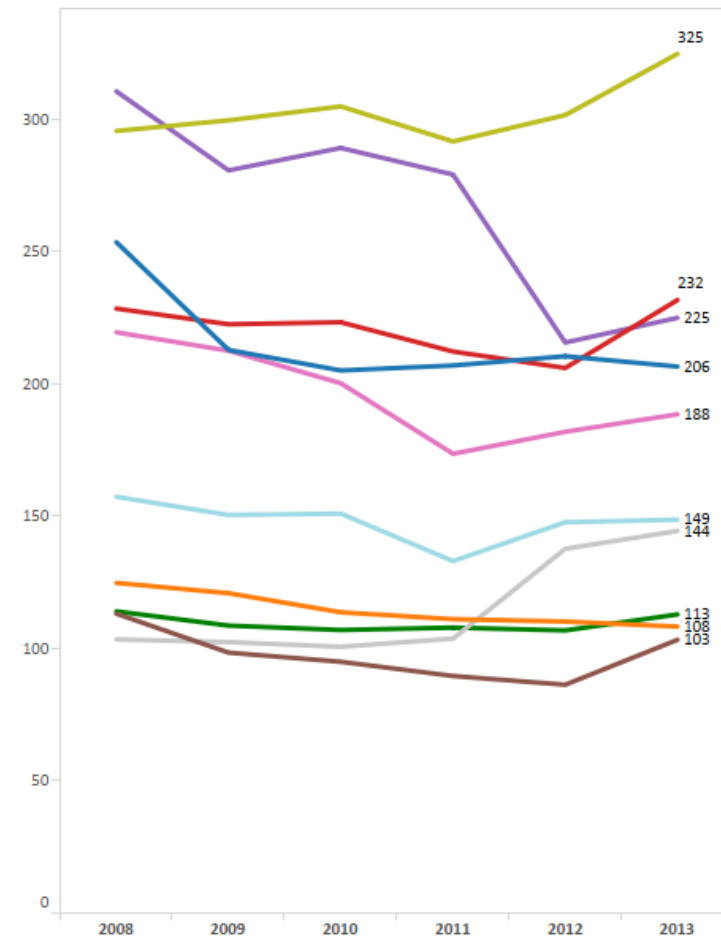
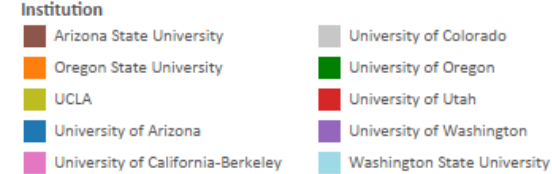
Source: UO Next Destination Survey (2014).

## Noninstructional Staff per 1000 Students among the PAC12

Institution	2008	2009	2010	2011	2012	2013
Arizona State University	113	98	95	90	86	103
Oregon State University	125	121	114	111	110	108
UCLA	295	299	305	291	301	325
University of Arizona	253	213	205	207	210	206
University of California-Berkeley	219	212	200	173	182	188
University of Colorado	103	102	101	104	138	144
University of Oregon	114	109	107	108	107	113
University of Utah	228	222	223	212	206	232
University of Washington	310	281	289	279	216	225
Washington State University	157	150	151	133	148	149

Source: IPEDS Student and Human Resource Archives FY08 to FY13.

Note: Noninstructional personnel include all employees that do not have faculty rank.



Source: IPEDS Student and Human Resource Archives FY08 to FY13.