

HIGHER EDUCATION IN OREGON: OVERVIEW

PRESENTED TO:
HOUSE COMMITTEE ON HIGHER EDUCATION, INNOVATION,
AND WORKFORCE DEVELOPMENT



February 2, 2015

BEN CANNON, EXECUTIVE DIRECTOR, HIGHER
EDUCATION COORDINATING COMMISSION

OREGON'S 40-40-20 GOAL

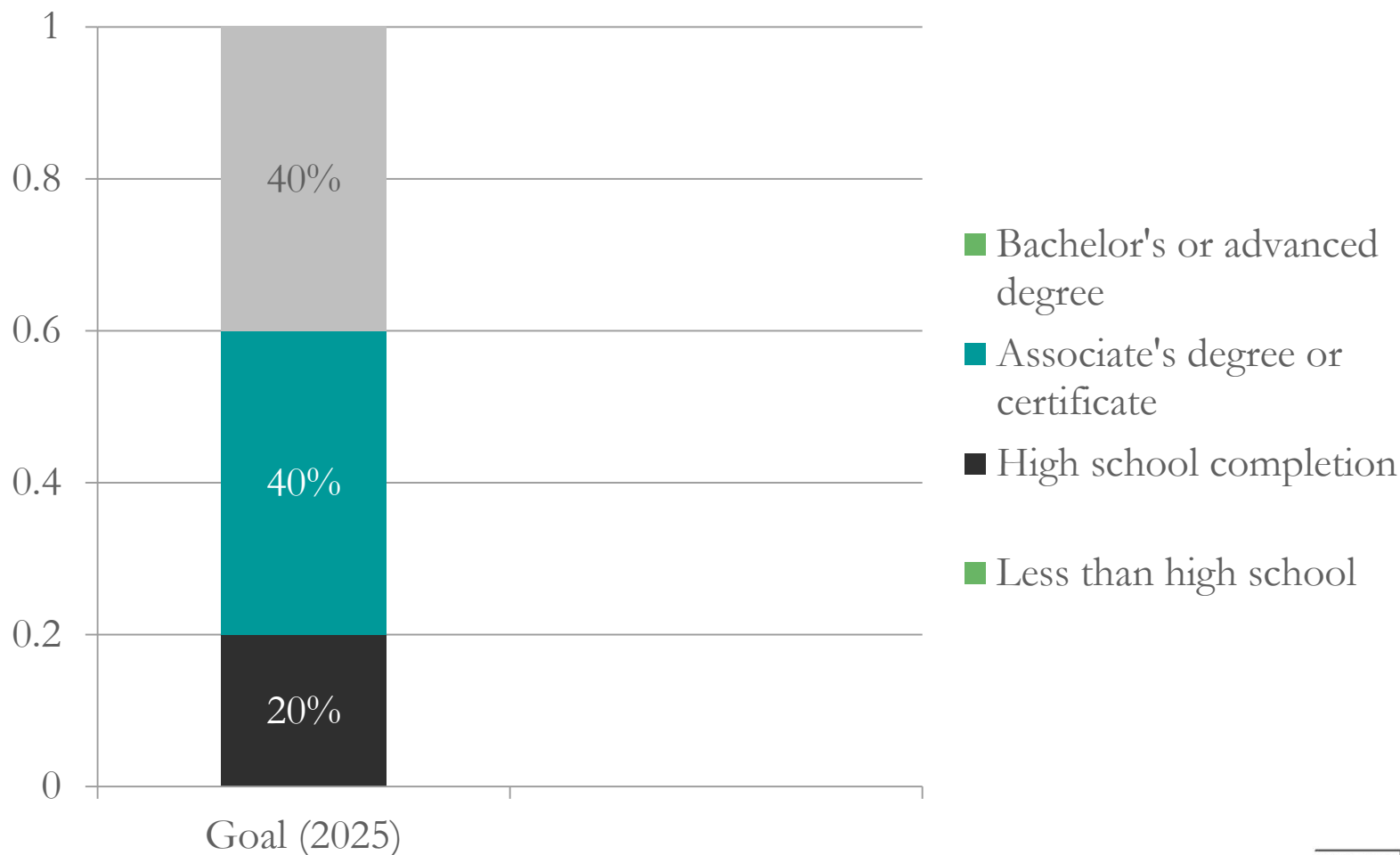
2

By 2025, 40% of adult Oregonians will hold a bachelor's or advanced degree, 40% will have an associate's degree or a meaningful postsecondary certificate, and all adult Oregonians will hold a high school diploma.



MEASURING OREGON AGAINST 40-40-20

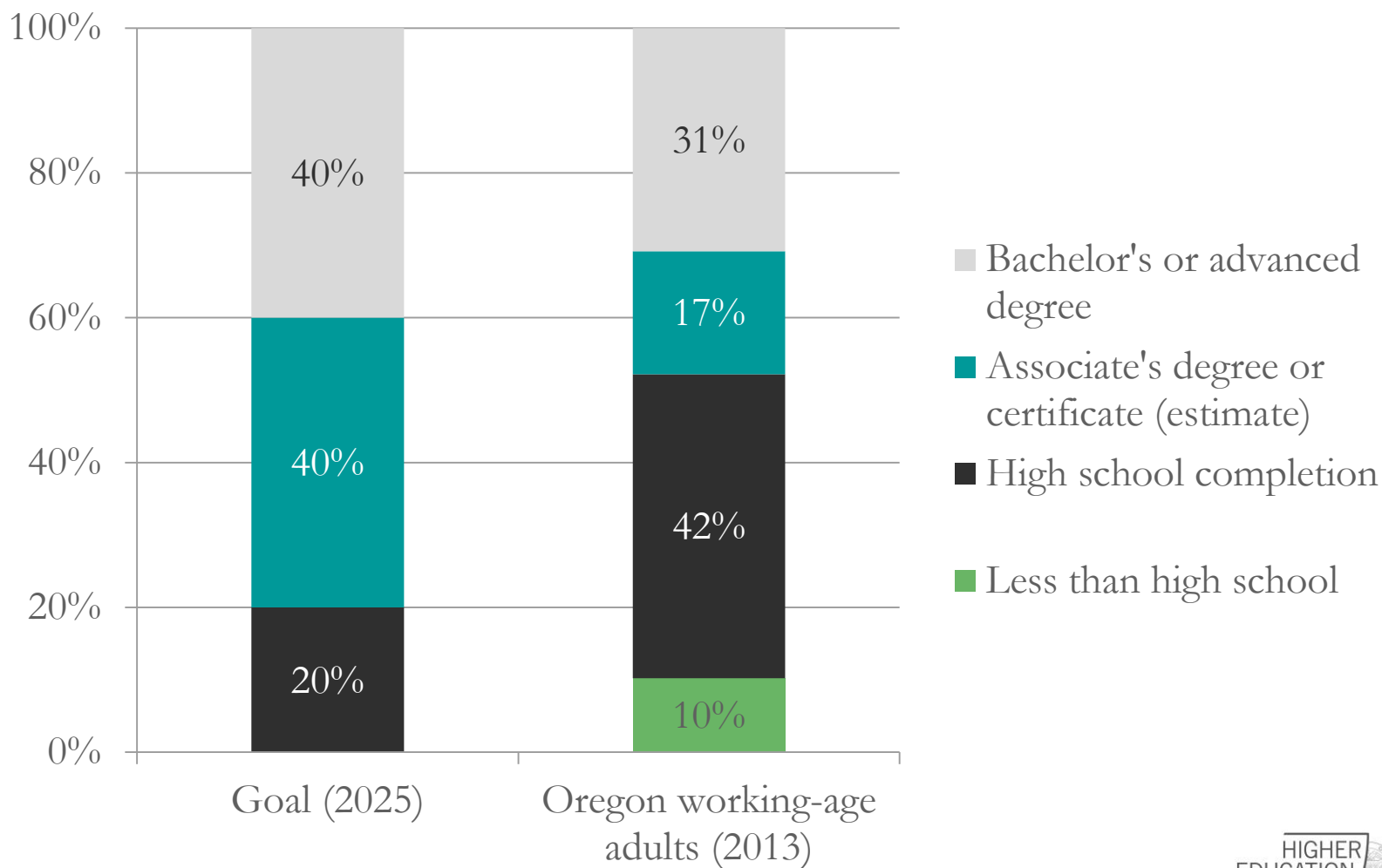
3



Source: HECC analysis of the American Community Survey

MEASURING OREGON AGAINST 40-40-20

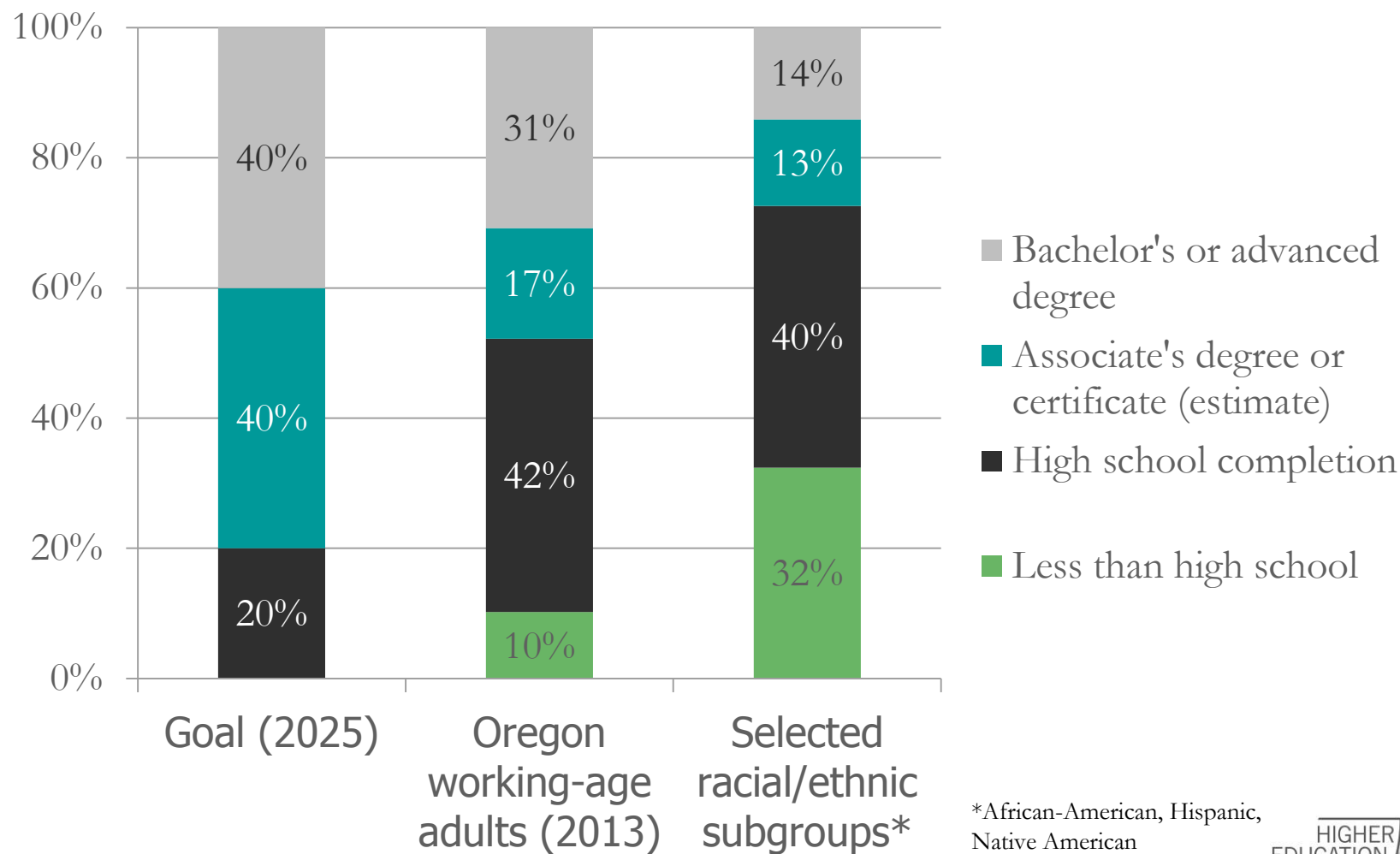
4



Source: HECC analysis of the American Community Survey

MEASURING OREGON AGAINST 40-40-20

5



Source: HECC analysis of the American Community Survey

*African-American, Hispanic, Native American



40-40-20: “ALL ADULTS”? THE “PIPELINE”?

6

- As a pipeline goal, applying to the expected high school class of 2025 (and beyond).
- As a goal for the adult population, applying to working-age adults in 2025 (and beyond).
- The latter goal should be continually refined based on actual labor market needs and valuable certificates, and may not be 40-40.

40-40-20: THE MIDDLE 40

7

- We endorse a broad understanding what “counts” for the middle 40, including:
 - two year associates’ degrees,
 - one-year certificates,
 - registered apprenticeships, and
 - Career pathways certificates
 - Other credentials should include
 - industry-based nationally-recognized certificates and
 - state licensure for various fields.

AMERICA AS 100 COLLEGE STUDENTS

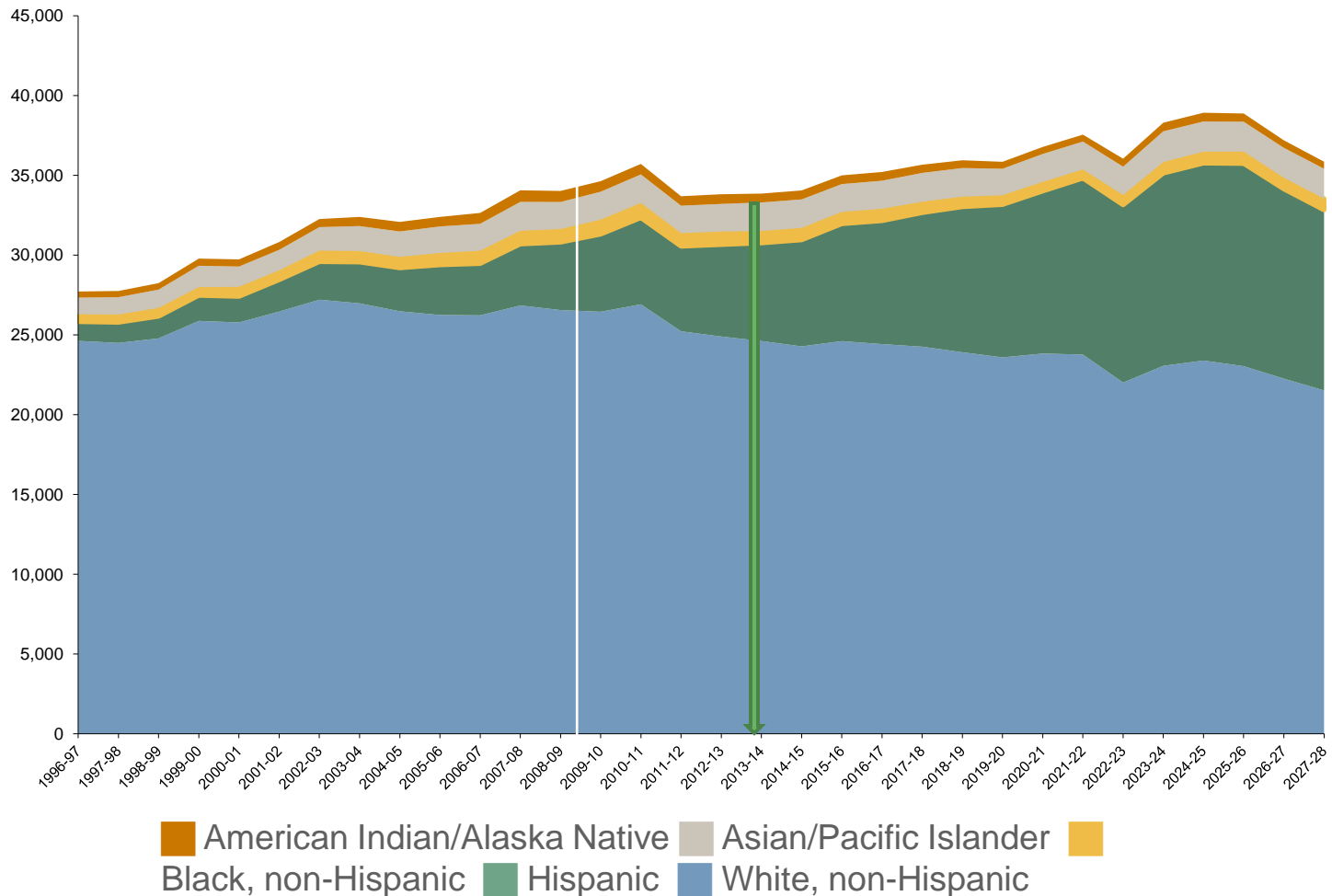
8



See: Gates Foundation, <http://postsecondary.gatesfoundation.org/student-stories/america-as-100-college-students/>

OREGON PUBLIC HIGH SCHOOL GRADUATES BY RACE/ETHNICITY, 1996-97 TO 2008-09 (ACTUAL), 2009-10 TO 2027-28 (PROJECTED)

9



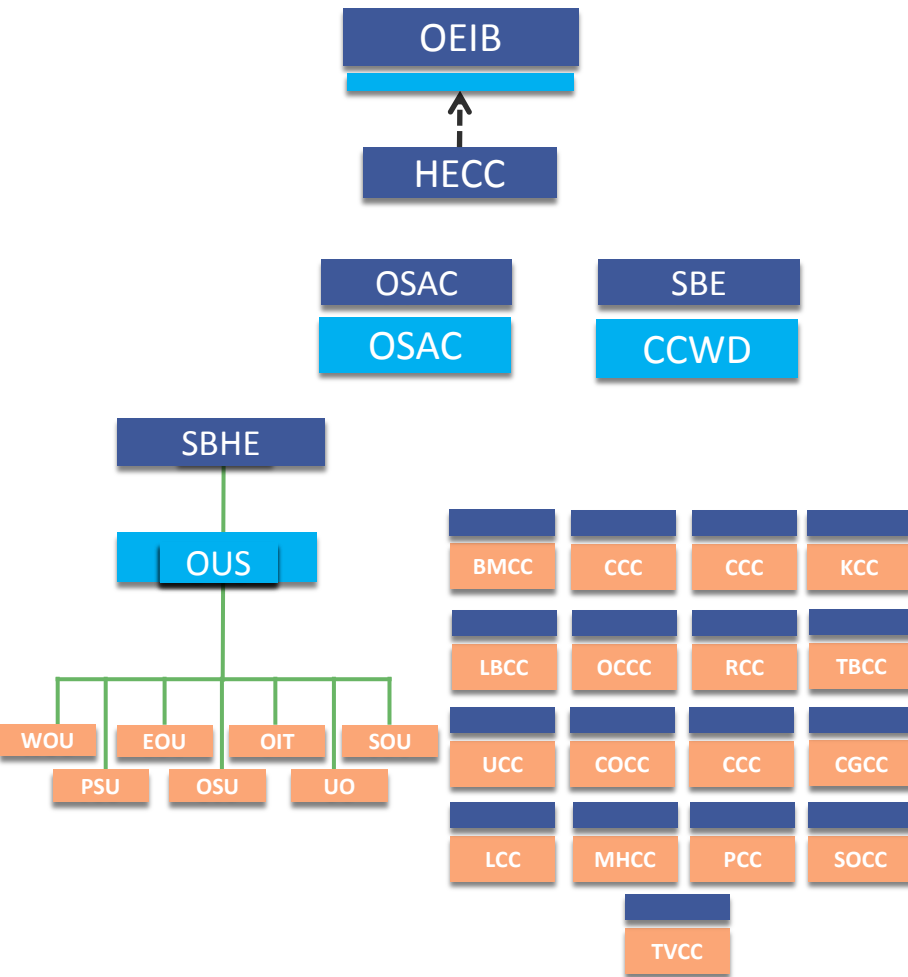
Source: Western Interstate Commission on Higher Education (WICHE)

OREGON HIGHER EDUCATION INSTITUTIONS

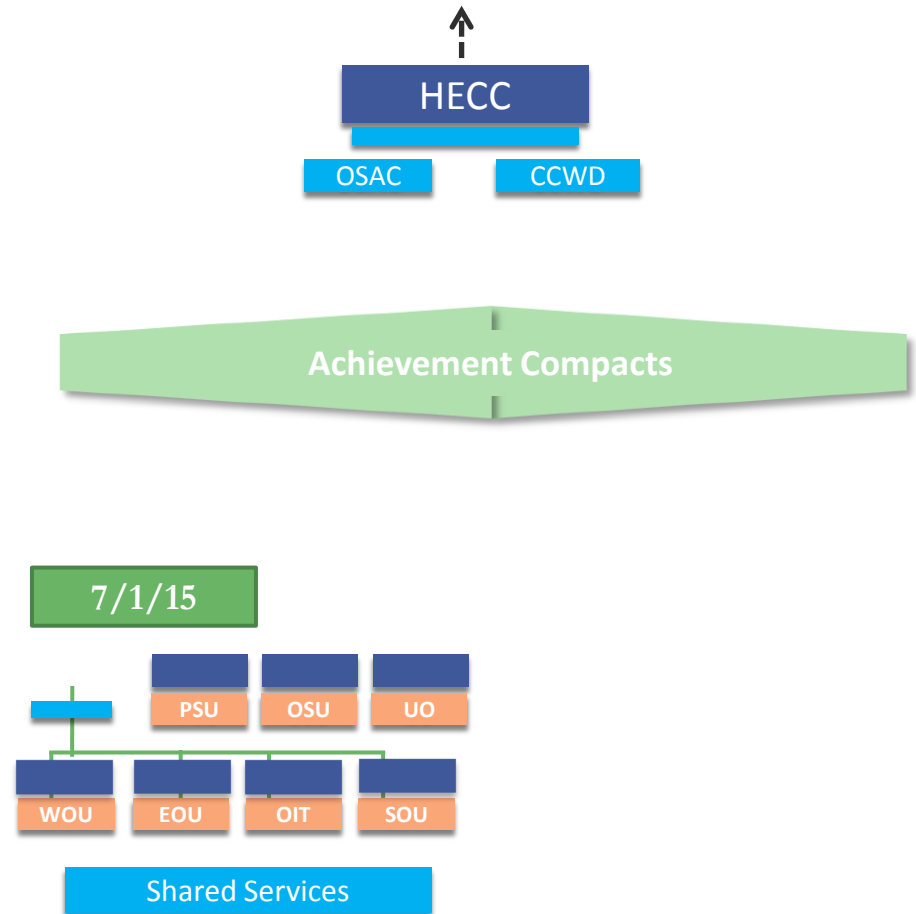
10

Institution type	Subtype	Number of institutions	HECC responsibilities
Oregon public universities	--	7	Funding allocations, state budget development, program approvals, mission approvals, coordination
Oregon Health and Sciences University	--	1	Coordination
Oregon community colleges	--	17	Funding allocations, state budget development, program approvals, coordination
Oregon-based private, degree-granting schools	State-regulated	30	Degree authorization, coordination
	Exempt from state regulation due to religious or accreditation status	62	Coordination
Non-Oregon degree-granting schools (distance education)	State-regulated	82	Degree authorization, coordination
	Exempt from state regulation due to religious status and/or lack of "physical presence" triggers	144	Coordination
Oregon private career schools (non-degree granting)	--	220	Licensure, teacher registry, coordination

Postsecondary Before 2013



Postsecondary Post 2013



- Institution
- Board/Council
- Agency

LOCAL AUTONOMY

12

- ✓ Existing Institutional Boards Maintained At Community Colleges
- ✓ New Institutional Boards Created at Public Universities
- ✓ Charters to Protect Public Mission

STREAMLINED STATE SUPPORT

13

- ✓ From Four Boards to One
- ✓ Clarity of Roles
- ✓ Single Post-Secondary Agency
- ✓ Free up Resources for Teaching and Learning

COORDINATION AND CONNECTIONS

14

- HECC is responsible for CCs, Universities, Financial Aid, and Consumer Protection (privates)
- Grades “11-14” Connected via work with OEIB

WHAT IS THE STATE INVESTMENT?

15

2013-15



2015-17 GRB

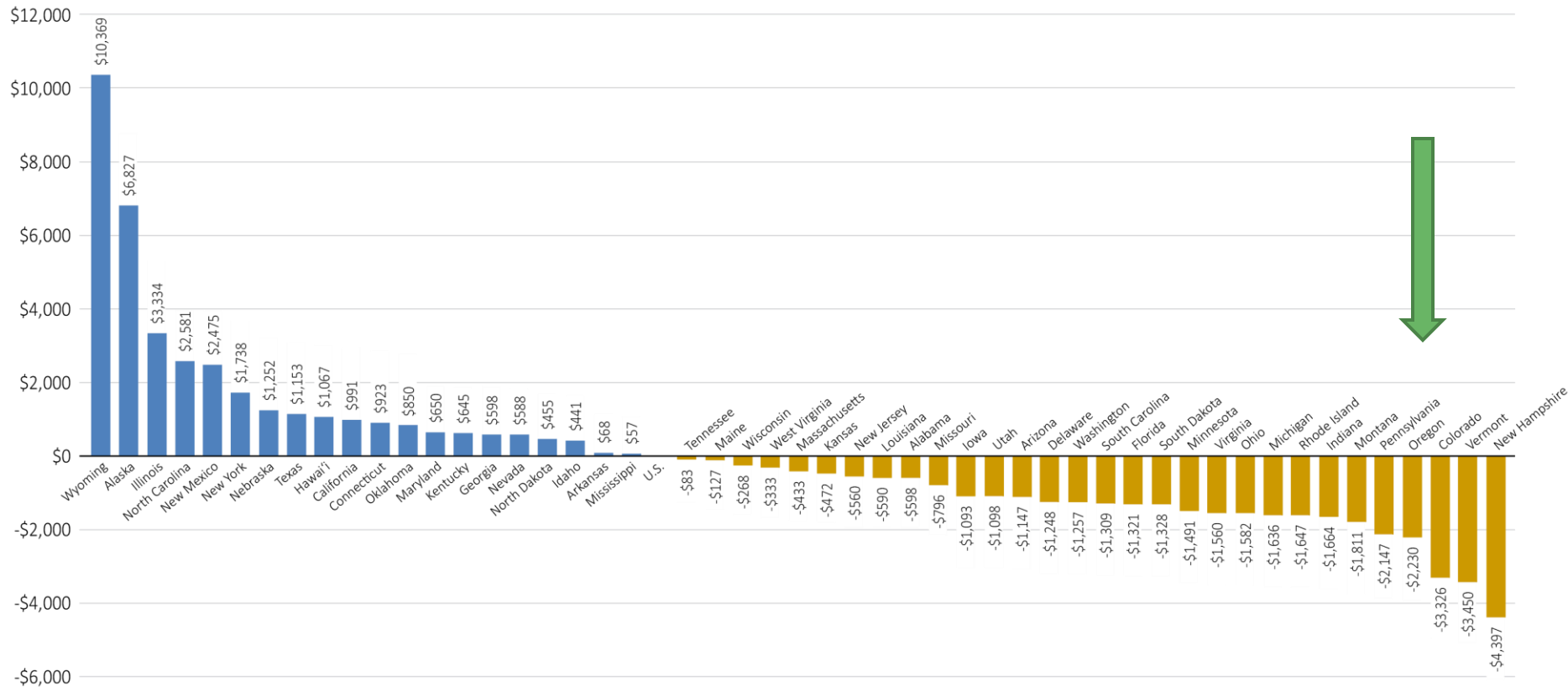


All figures are General and Lottery Fund, in millions

*HECC GRB also includes new investments in Youth Employment (\$15m), Worker training (\$6m), and a Community Innovation Fund (\$25m).

EDUCATIONAL APPROPRIATIONS PER FTE STATE DIFFERENCES FROM U.S. AVERAGE, FISCAL 2013

16



Note: Dollars adjusted by Cost of Living Adjustment and Enrollment Index.

Source: State Higher Education Executive Officers.

Source: Western Interstate Commission on Higher Education (WICHE)

OREGON FUNDING OF HIGHER EDUCATION

17

Annual state funding per resident student (FTE)

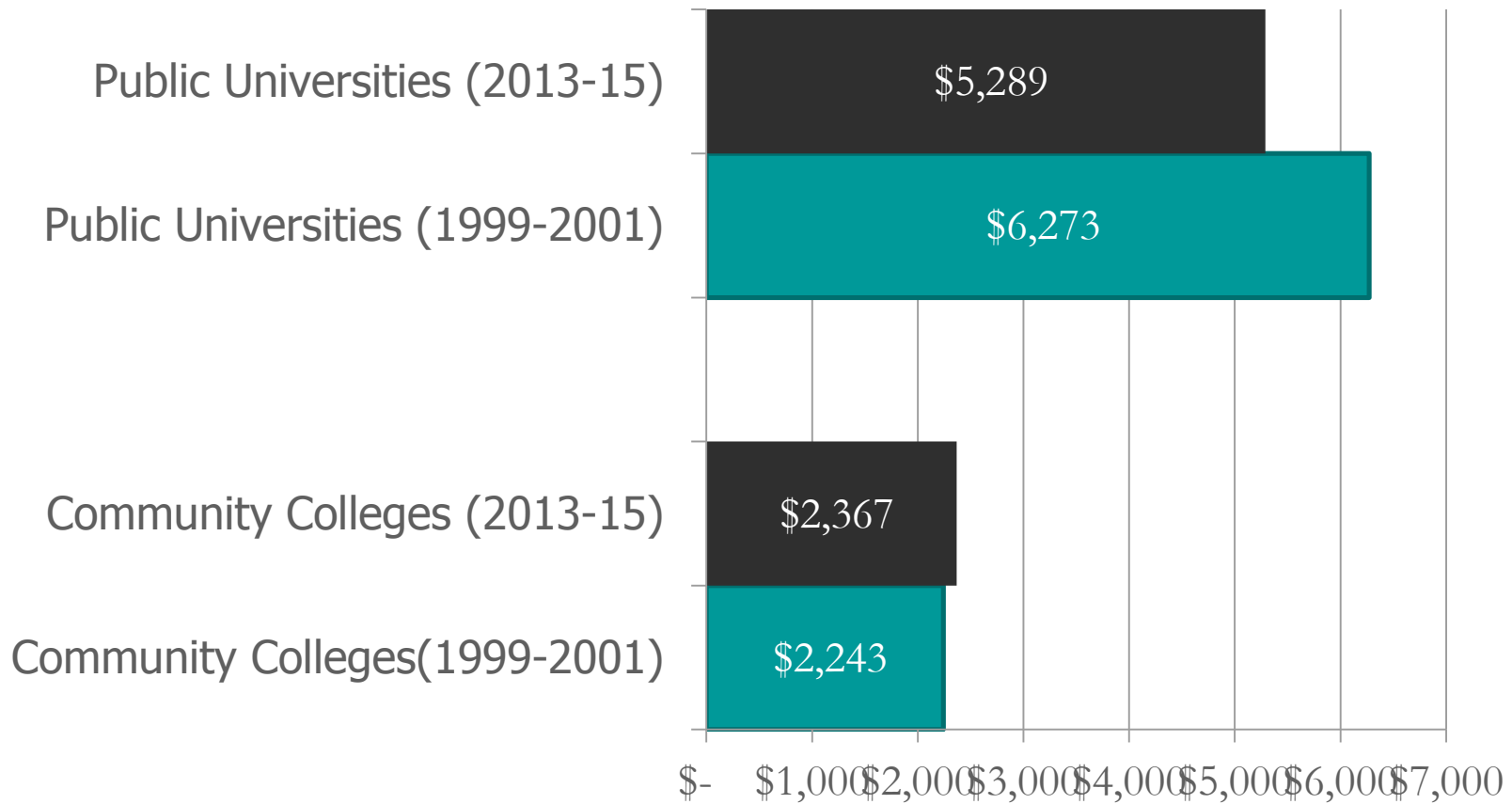


Source: Higher Education Coordinating Commission

OREGON FUNDING OF HIGHER EDUCATION

18

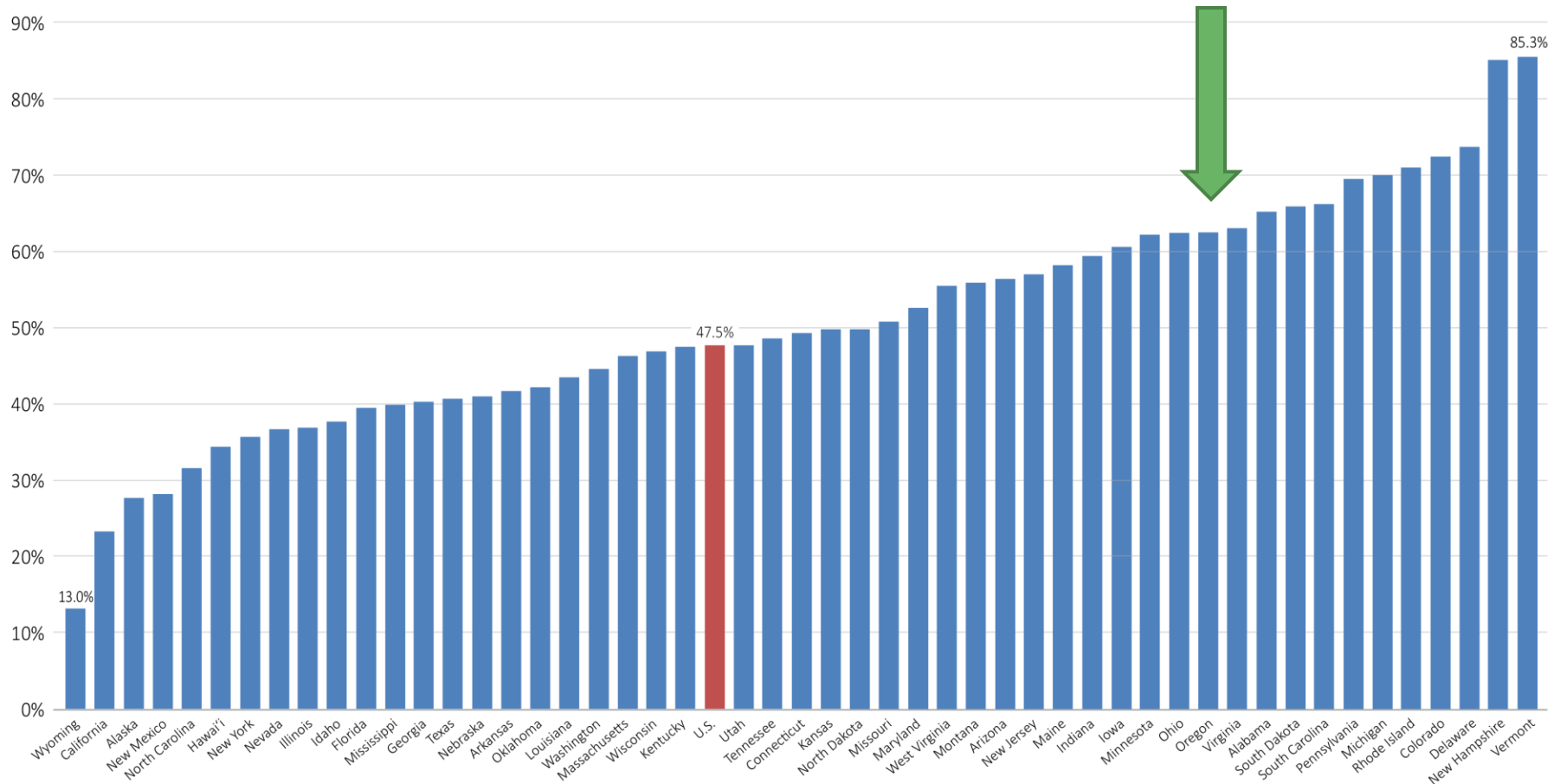
Annual state funding per resident student (FTE)



Source: Higher Education Coordinating Commission

NET TUITION AS A PERCENT OF PUBLIC HIGHER EDUCATION TOTAL EDUCATIONAL REVENUE BY STATE, FISCAL 2013

19



Note: Dollars adjusted by 2013 HECA, Cost of Living Adjustment, and Enrollment Index.
Source: State Higher Education Executive Officers.

Source: Western Interstate Commission on Higher Education (WICHE)

STATE NEED-BASED AID PER STUDENT

20



Source: 44th Annual Survey Report on State-Sponsored Student Financial Aid, National Association of State Student Grant and Aid Programs (NASGAP)

MAJOR 2015 STATE ISSUES

21

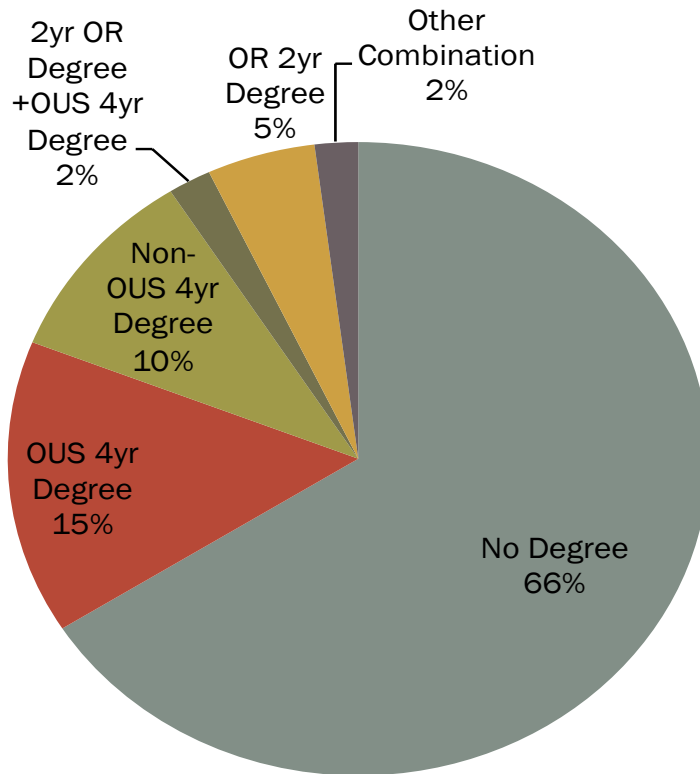
- Funding
- Affordability: potential new investments in OOG, free community college, Pay it Forward, tuition policy
- Alignment: e.g. accelerated learning, dual credit, placement policies
- Outcomes-based funding
- Consumer protection: especially for-profit institutions
- Workforce training

So how do we get from here to there?



POSTSECONDARY OUTCOMES FOR OREGON'S HIGH SCHOOL GRADUATING CLASS OF 2005

23

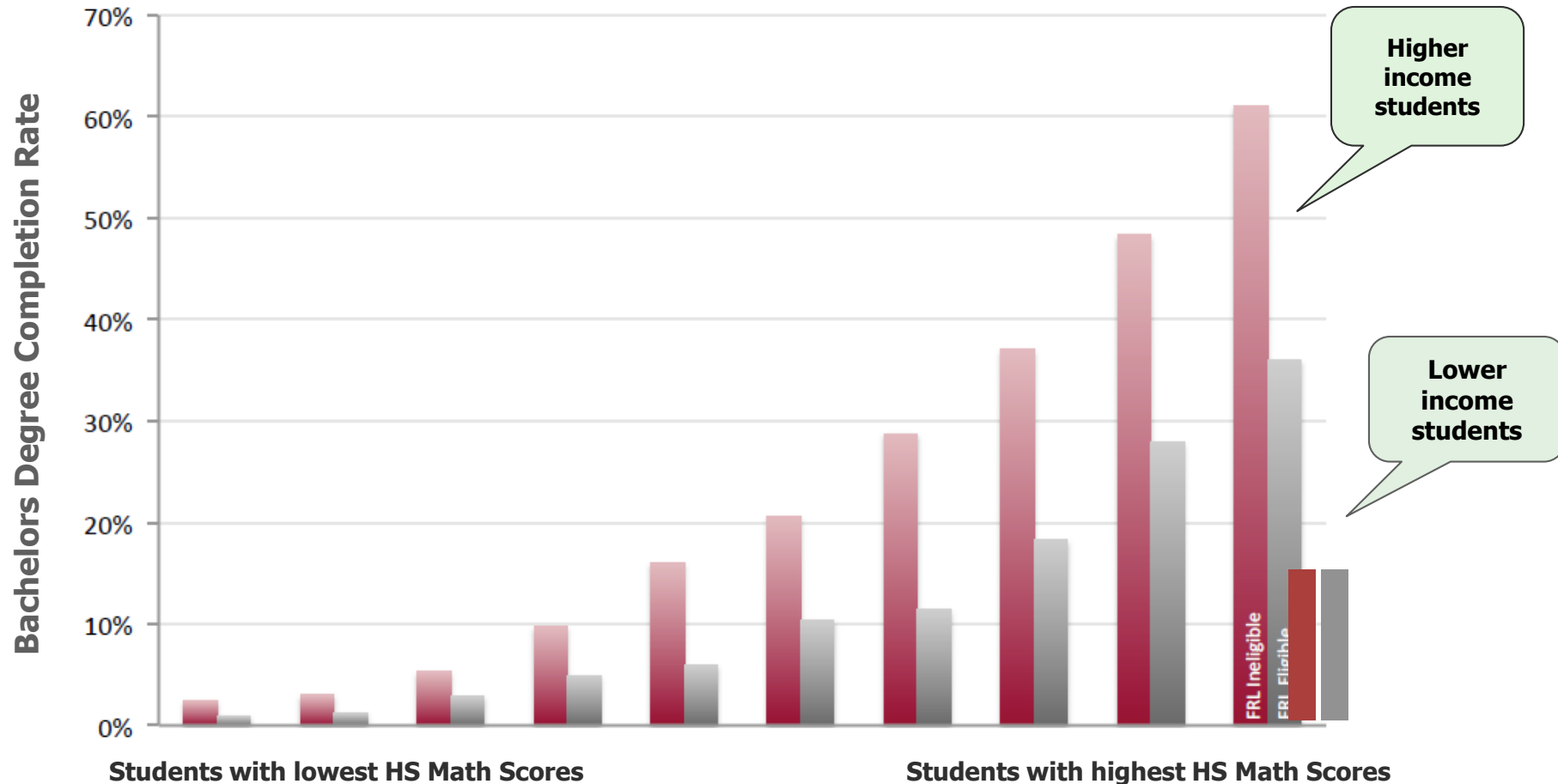


Outcome	Number	Percent
No Degree	21,335	66%
OUS 4yr Degree	4,766	15%
Non-OUS 4yr Degree	3,352	10%
2yr OR Degree + OUS 4yr Degree	465	2%
OR 2yr Degree	1,533	5%
Other Combination	741	2%

Source: ECONorthwest analysis of data from Oregon Department of Education and National Student Clearinghouse

STUDENTS IN POVERTY COMPLETE COLLEGE AT LOWER RATES REGARDLESS OF THEIR ACADEMIC SKILL LEVEL

24



The ten pairs of red/gray bars above show all Oregon students divided into 10 equal-sized groups based on their high school math scores. The vertical bars show the Bachelors degree completion rate for students eligible for free/reduced price lunch vs. those who are not eligible.

Source: ECONorthwest longitudinal analysis using matched ODE, OUS, CCWD, and NSC records

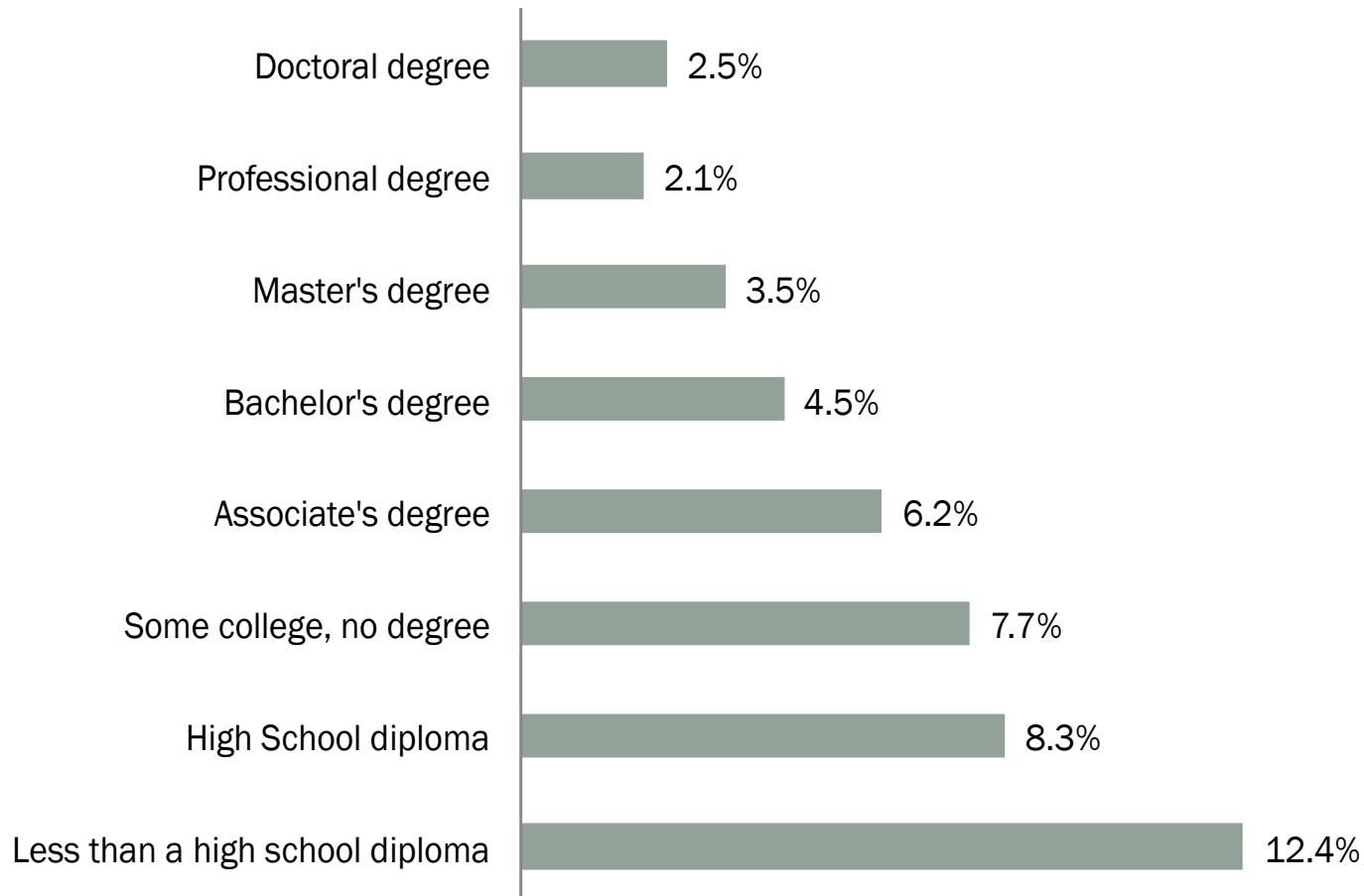
*So how do we get from
here to there, ...*

AND WHY DOES IT MATTER?



UNEMPLOYMENT RATES BY EDUCATIONAL ATTAINMENT LEVEL, U.S., 2012

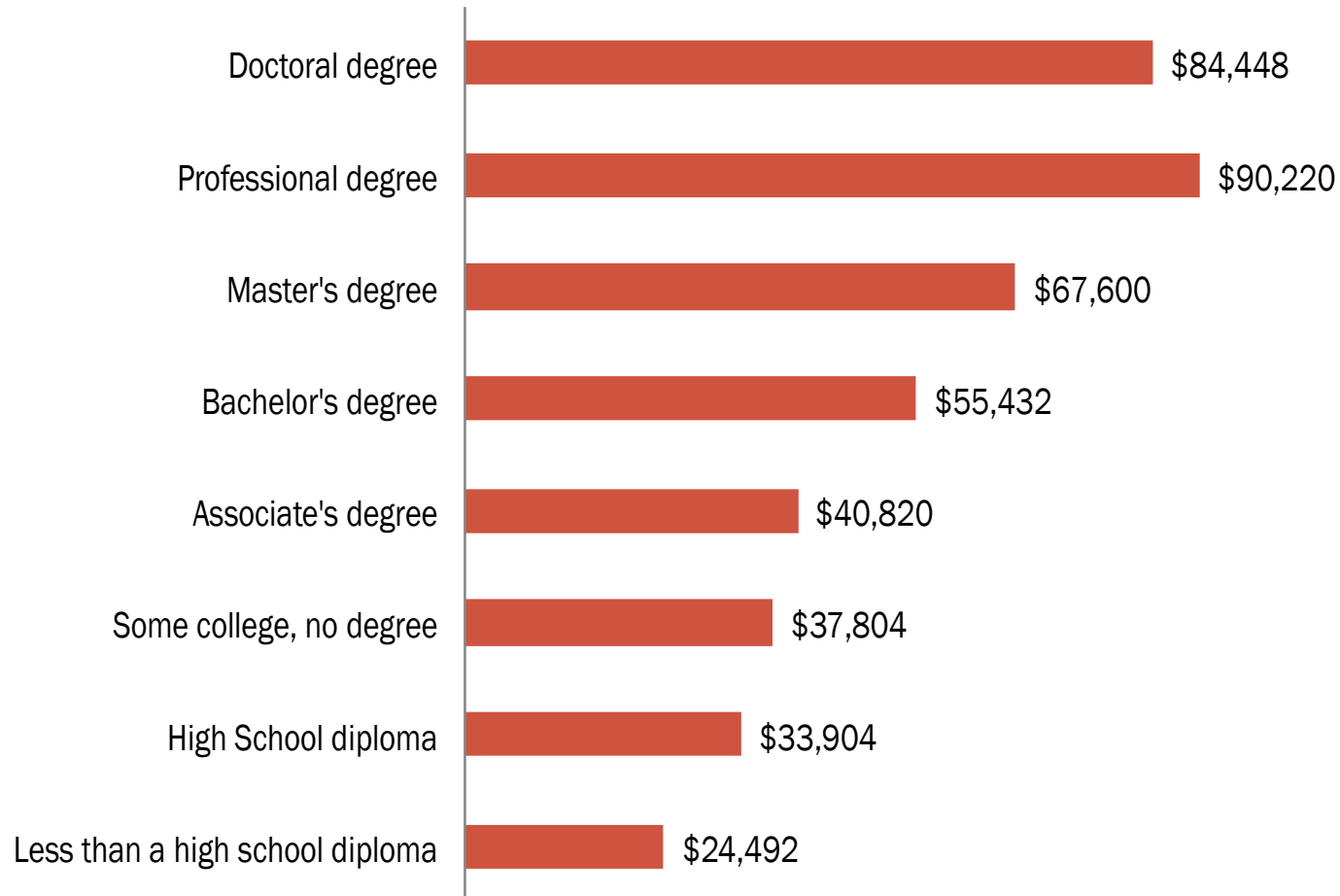
26



Source: Bureau of Labor Statistics, Current Population Survey

MEDIAN ANNUAL EARNINGS BY EDUCATIONAL ATTAINMENT LEVEL, U.S., 2012

27



Source: Bureau of Labor Statistics, Current Population Survey