

# Department of Human Services

## 2013 House Human Services & Housing Committee

*Planning for Safety, Health and Independence in Oregon*

*February 6, 2013*



# Our Core Values


Integrity, Stewardship, Responsibility,  
Respect, Professionalism, and . . .

- *Innovation*
- *Service Equity*

DHS is committed to sustaining a learning culture which seeks to continually improve how we do our work.

*Innovation*

To meet the ever changing needs of the individuals we serve and of our communities, we implement the best and most INNOVATIVE practices. We encourage people at all levels to bring forth new ideas in an open collaborative environment.

 DHS | Safety, health and independence for all Oregonians




INTEGRITY • INNOVATION • RESPECT • SERVICE EQUITY • RESPONSIBILITY • STEWARDSHIP • PROFESSIONALISM

SERVICE EQUITY is a measure of results, not effort.

*Service Equity*

We use individual approaches which are free from bias or favoritism to achieve our common outcomes. SERVICE EQUITY creates an environment of fairness and respect that values, attracts and supports diversity.

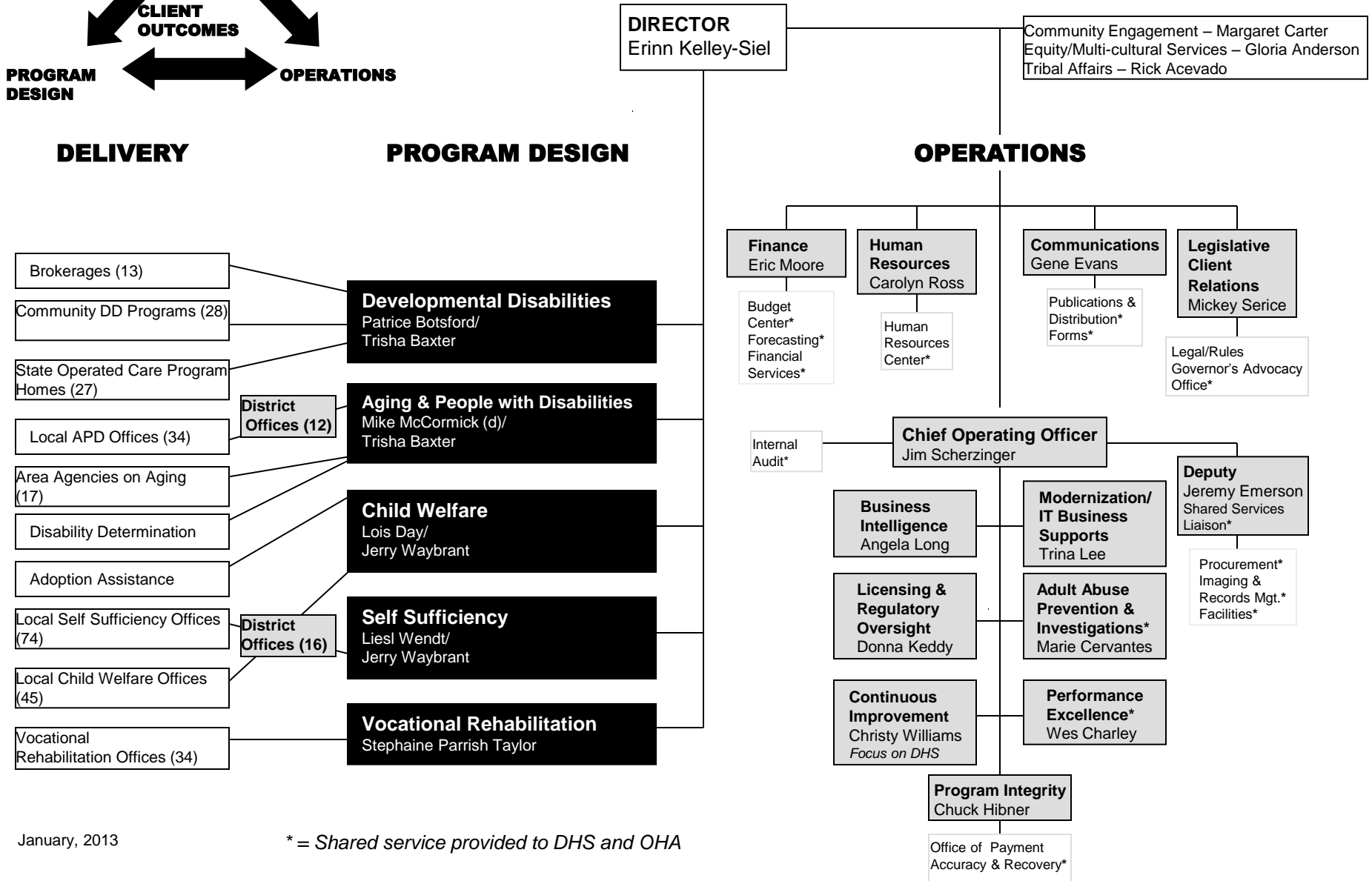
 DHS | Safety, health and independence for all Oregonians



INTEGRITY • INNOVATION • RESPECT • SERVICE EQUITY • RESPONSIBILITY • STEWARDSHIP • PROFESSIONALISM

# DEPARTMENT OF HUMAN SERVICES

## Organization Chart



# Safety, Health and Independence for all Oregonians

---

DHS provides direct services to more than 1 million Oregonians each year. These services provide a key safety net for those in our society who are most vulnerable or who are at a difficult place in their life.

## During 2012:

- Food benefits helped 1,048,833 people avoid food insecurity and hunger.
- Qualified 155,921 low-income Oregonians for medical coverage.
- Provided TANF cash assistance to help stabilize 56,439 low-income families.
- Helped over 35,366 seniors and people with physical disabilities with activities of daily living.
- Fed and provided health promotion services to over 387,318 seniors via Older Americans Act
- Adult and Child protective services kept 20,000 adults and 10,984 safe.
- Adoption services found permanent, safe homes for 731 children.
- Assisted over 20,292 people with developmental disabilities live safely in communities. .
- Helped 8,385 domestic violence victims address safety concerns.

# Investing in Oregon Communities

---

Direct investments in Oregon Communities in 2013-15 will be:

- ~76.47% of budget is spent directly in Oregon communities as direct payments to providers and clients. ~94.7% when including direct service staff.
- Over \$9.8 million/day to local nursing homes, home care workers, foster parents, child care providers, food benefits and many more
- Will leverage over \$6 billion of federal funding for Oregon
- Jobs and economic activity:
  - Will help pay salaries of over 9,000 child care workers
  - Will help pay salaries of over 25,000 “In-Home Workers” that provide services to Seniors and People with Disabilities
  - Will Average Supplemental Nutrition Assistance Program subsidy of \$230 generates \$414 of economic activity
- Will help people with disabilities receive over \$130 mil/mo in federal benefits.

# The Economy and DHS caseloads

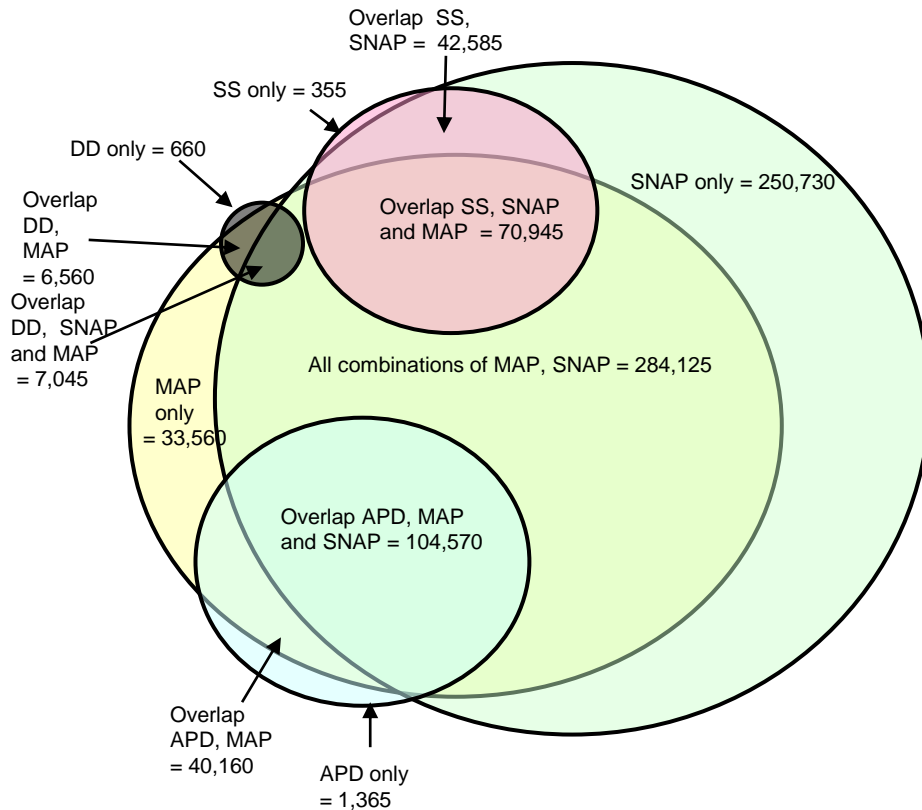
---

With Oregon unemployment figures remaining high at 8.3% in December (a slight improvement from the previous month, when the rate was 8.4%), and county unemployment rates ranging from 6.7% to 13.3%, demand for temporary economic help such as cash and food assistance remains at record levels.

- **Supplemental Nutrition Assistance Program (SNAP)** - An 81.9% increase from April 2008 to October 2012 in households receiving SNAP benefits with more than 15,468 added in the last year. In October 2012 807,034 (1 in 5) Oregonians received SNAP benefits.
- **Temporary Assistance for Needy Families (TANF)** - A 40.6% increase from October 2009 to October 2012 statewide in families receiving TANF benefits with a 205% increase in the TANF two-parent program in same period.
- **Developmental Disabilities** – A 10.21% increase from June 2009 to June 2012 statewide for individuals with developmental disabilities needing supportive and comprehensive services.
- **Medicare Savings Programs** - A 16.5% increase in enrollment in Medicare Savings Programs from July 2009 - December 2012
- **Oregon Health Plan** – An increase of more than 149,000 families, a 55.6% increase, from October 2008 to October 2010 statewide on the Oregon Health Plan.

# 813,300 Adults\* Served by DHS|OHA in 2011

The graphic shows how adults overlap across major program areas.



Participation by number of programs

One program	46.5%
Two programs	24.8%
Three programs	20.7%
Four programs	6.3%
Five or more	1.7%

## Medical Assistance Programs (MAP)

373,565 adults (45.9% of all adults) were eligible for MAP in 2011

★ MAP only = 4.1% of all adults

★ MAP and SNAP only = 9.3%

★ Three or more including MAP = 27.2%

## Supplemental Nutrition Assistance Program (SNAP)

627,450 adults (77.1% of all adults) received SNAP benefits at some time during 2011

★ SNAP only = 30.8% of all adults

★ SNAP and MAP only = 9.3%

★ Three or more including SNAP = 27.1%

## Self Sufficiency Programs (SS) - Mostly TANF

116,030 adults (14.3% of all adults)

★ Self sufficiency only = 0.1%

★ Self sufficiency, SNAP without MAP = 5.2%

★ Self sufficiency, SNAP with MAP = 8.7%

## Aging and People with Disabilities (APD)

146,420 adults (18.0% of all adults)

★ APD only = 0.2%

★ APD, MAP without SNAP = 4.9%

★ APD, MAP with SNAP = 12.9%

## Developmental Disabilities (DD)

14,475 adults (1.8% of all adults)

★ DD only = 0.1%

★ DD, MAP without SNAP = 0.8%

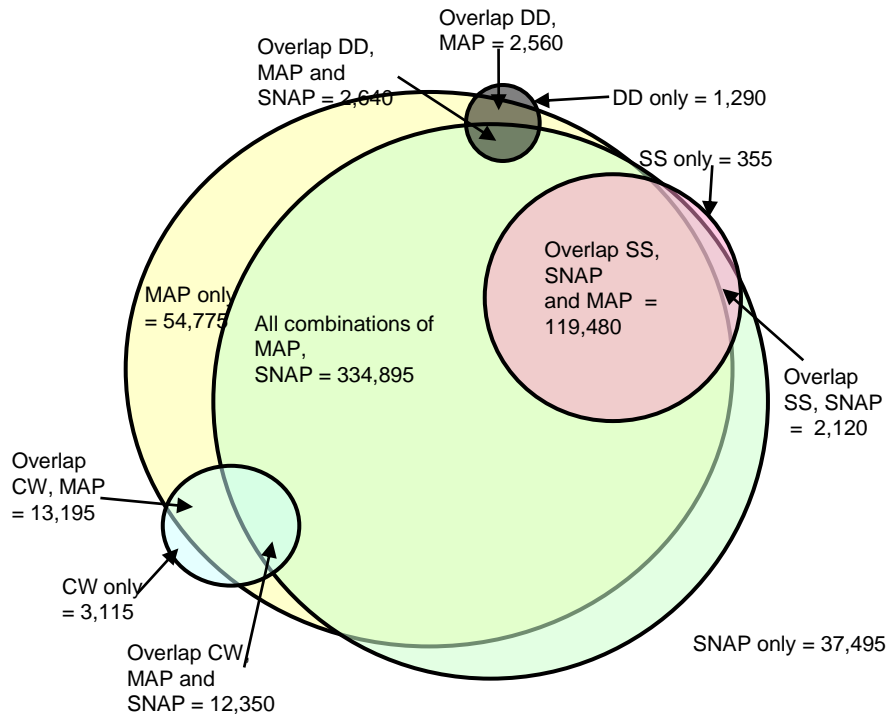
★ DD, MAP with SNAP = 0.9%

\* Adults = individuals 19 years and older



# 509,590 Youth\* Served by DHS|OHA in 2011

The graphic shows how youth overlap across major program areas.



Participation by number of programs

One program	24.3%
Two programs	35.1%
Three programs	28.9%
Four programs	10.1%
Five or more	1.5%

\* Youth = individuals 0-18 years

\*\* Child Welfare client counts include Jan – July only

## Medical Assistance Programs (MAP)

426,835 youth (83.8% of all youth) were eligible for MAP in 2011

★ MAP only = 10.7% of all youth

★ MAP and SNAP only = 27.3%

★ Three or more including MAP = 40.3%

## Supplemental Nutrition Assistance Program (SNAP)

384,640, (75.5% of all youth) received SNAP benefits at some time during 2011

★ SNAP only = 7.4% of all youth

★ SNAP and MAP only = 27.3%

★ Three or more including SNAP = 38.7%

## Self Sufficiency Programs (SS) - Mostly TANF

124,045 youth (24.3% of all youth)

★ Self sufficiency only = 0.1%

★ Self sufficiency, SNAP without MAP = 0.4%

★ Self sufficiency, SNAP with MAP = 23.4%

## Child Welfare (CW) \*\*

29,080 youth (5.7% of all youth)

★ CW only = 0.6%

★ CW, MAP without SNAP = 2.6%

★ CW, MAP with SNAP = 2.4%

## Developmental Disabilities (DD)

6,665 youth (1.3% of all youth)

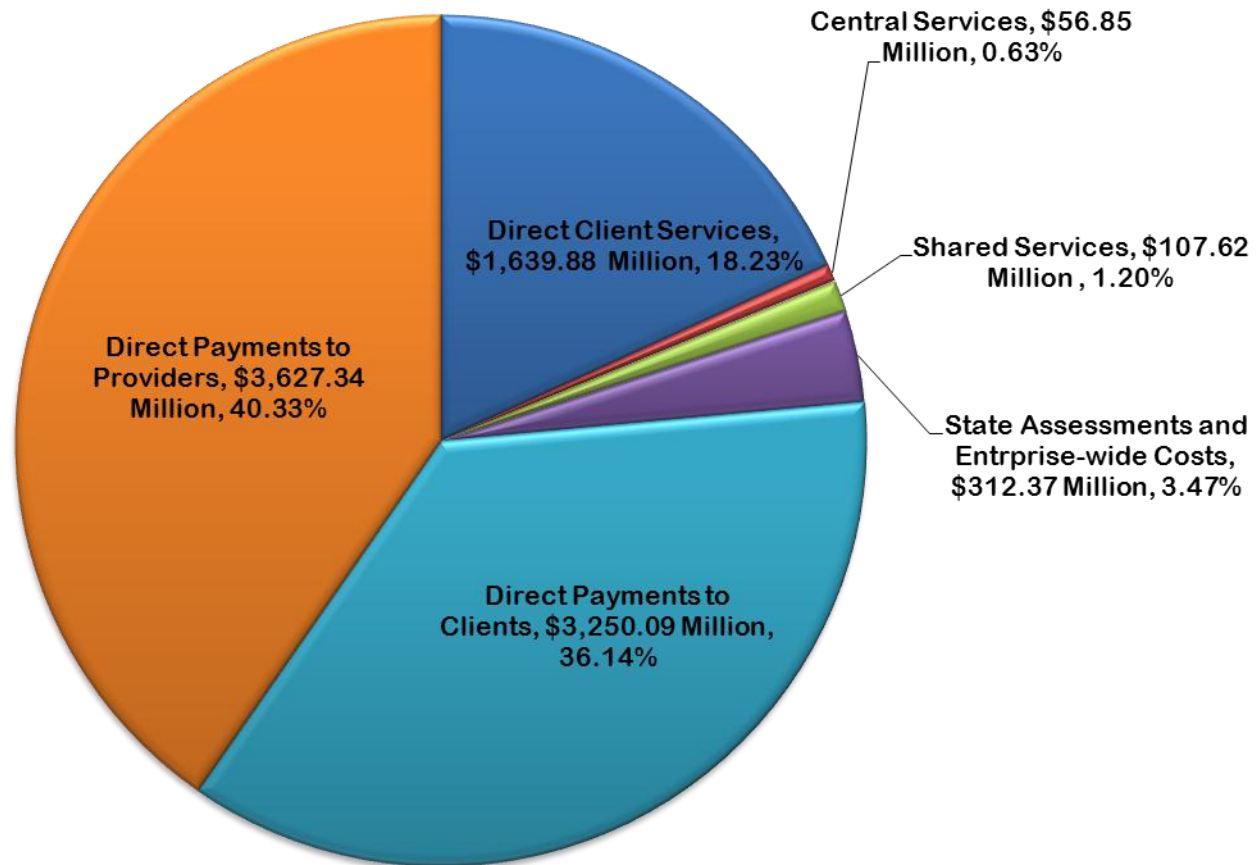
★ DD only = 0.3%

★ DD, MAP without SNAP = 0.5%

★ DD, MAP with SNAP = 0.5%



## DHS Program Budgets – 94.7% in Direct Payments and Services



# Oregon DHS: Leading Into the Future

Where We've Been	Where We Are Going
Multiple programs, departments, divisions with own missions, visions	One Department, One Mission, One Vision, Leveraging Program Specialties
Regulative & Compliance Oriented	Outcome & Results Oriented
Policy & Program Focused	Customer Focused
Multiple, Disconnected Data, Eligibility & Technology Services	Integrated & Coordinated Data, Eligibility & Technology Services
Managers Define Solutions	Staff Are Empowered to Partner with Leadership to Create Solutions
Crisis Driven, Reactive, Risk Averse	Anticipatory, Proactive, Innovative
Government Services Operate in Relative Isolation	Collaborative Community & Business Partner

# Department of Human Services

[www.oregon.gov/dhs](http://www.oregon.gov/dhs)

*Planning for Safety, Health and Independence in Oregon*

# Thank you!