



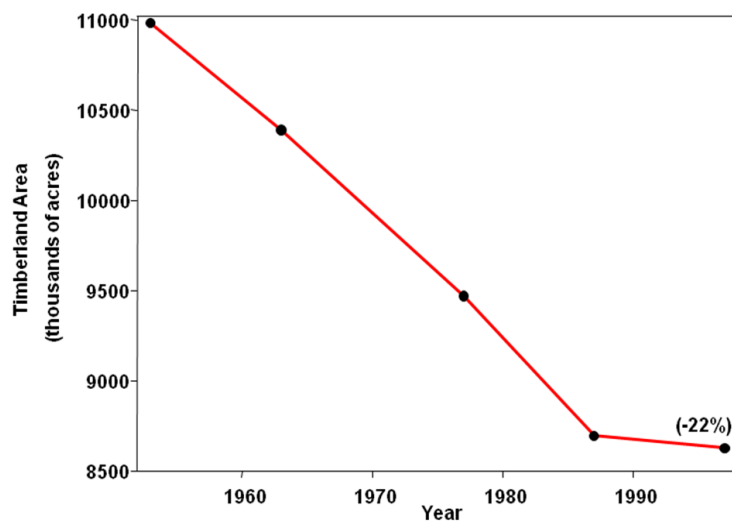
# Land use planning and Oregon's forest resources

*"To conserve forest lands by maintaining the forest land base and to protect the state's forest economy . . ."*

*--- Oregon land use planning Goal 4*

The conversion of commercial forestland to urban and low-density residential use has slowed dramatically since Oregon's land use planning program began.

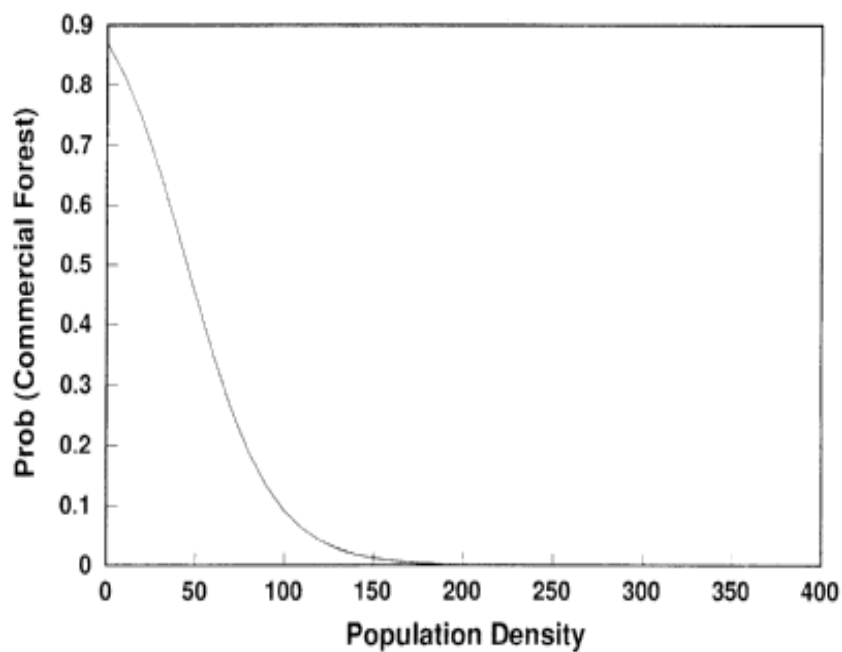
**Change in Private Timberland Area in Oregon, 1953-1997**



Fragmenting forestland and adding dwellings poses management challenges.

- Increased conflicts between active forest management and residential or commercial use
- Increased cost and complexity in fire protection
- Displacement of wildlife and fragmentation of habitat
- Reduced timber production

The number homes scattered in forests is increasing in some areas. The probability that forestland will be actively managed falls as population density rises.



Non-regulatory tools and incentives can help ensure that forestlands stay in working forest use.

- Working forest easements
- Transferable development rights
- Conservation acquisition