



Senate Committee on Veterans and Emergency Preparedness
House Committee on Veterans' Services and Emergency Preparedness

Oregon Highways Seismic Options Report

Paul Mather, ODOT Highway Division Administrator

June 6, 2013



Oregon Highway Seismic Options Report

Identify strategic lifeline routes

Minimize long term economic damage



Bridge Seismic Upgrade



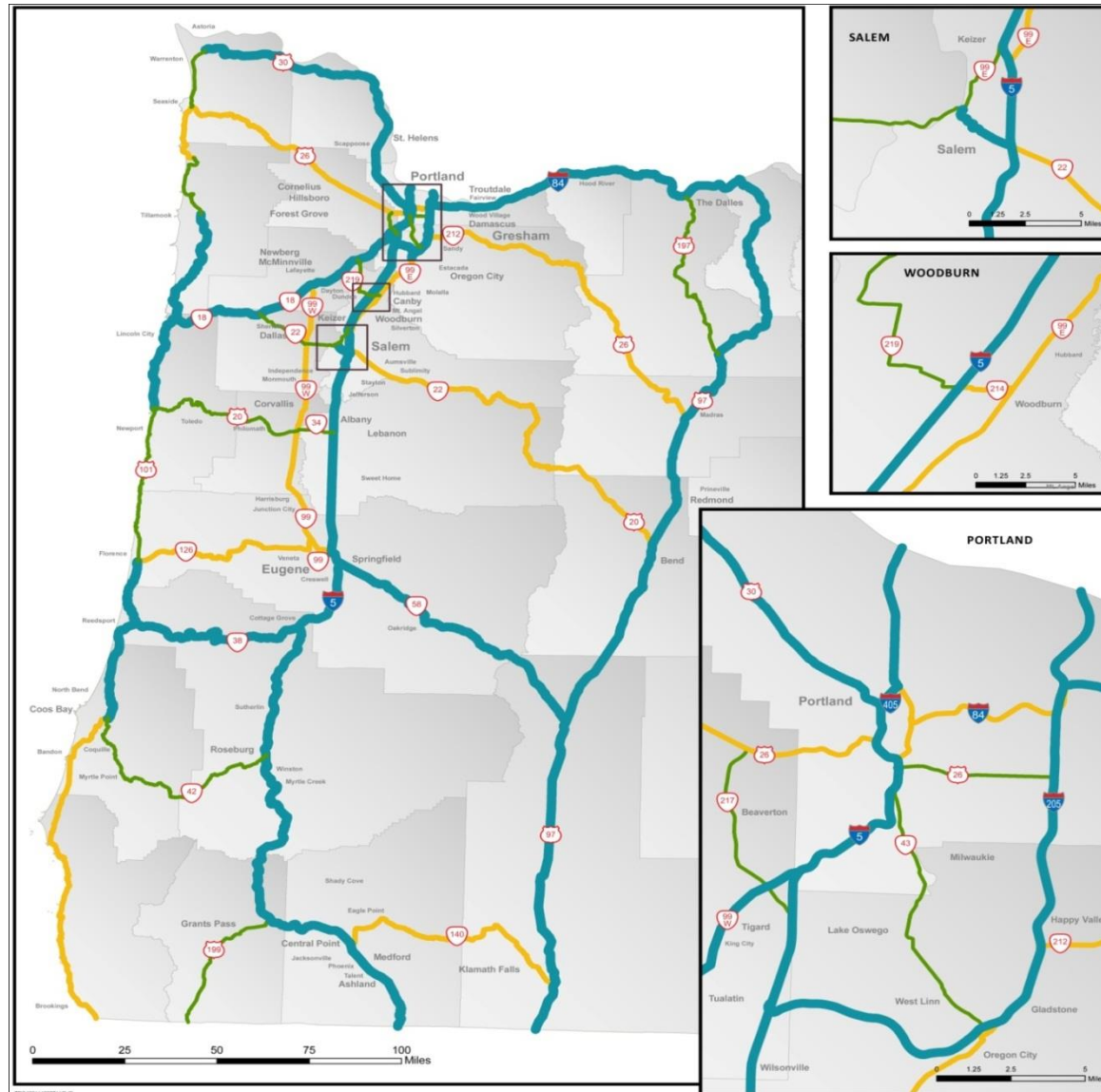
Landslide Hwy 38

Route Selection

Survivability	<ul style="list-style-type: none">• Emergency responders• Critical care facilities
Life Support	<ul style="list-style-type: none">• Critical care facilities• Life support resources• Evacuation routes
Economic Recovery	<ul style="list-style-type: none">• Critical freight corridors• Mobility into and out of the region• Routes between large metro areas

Recommended Lifeline Route

1st tier
2nd tier
3rd tier

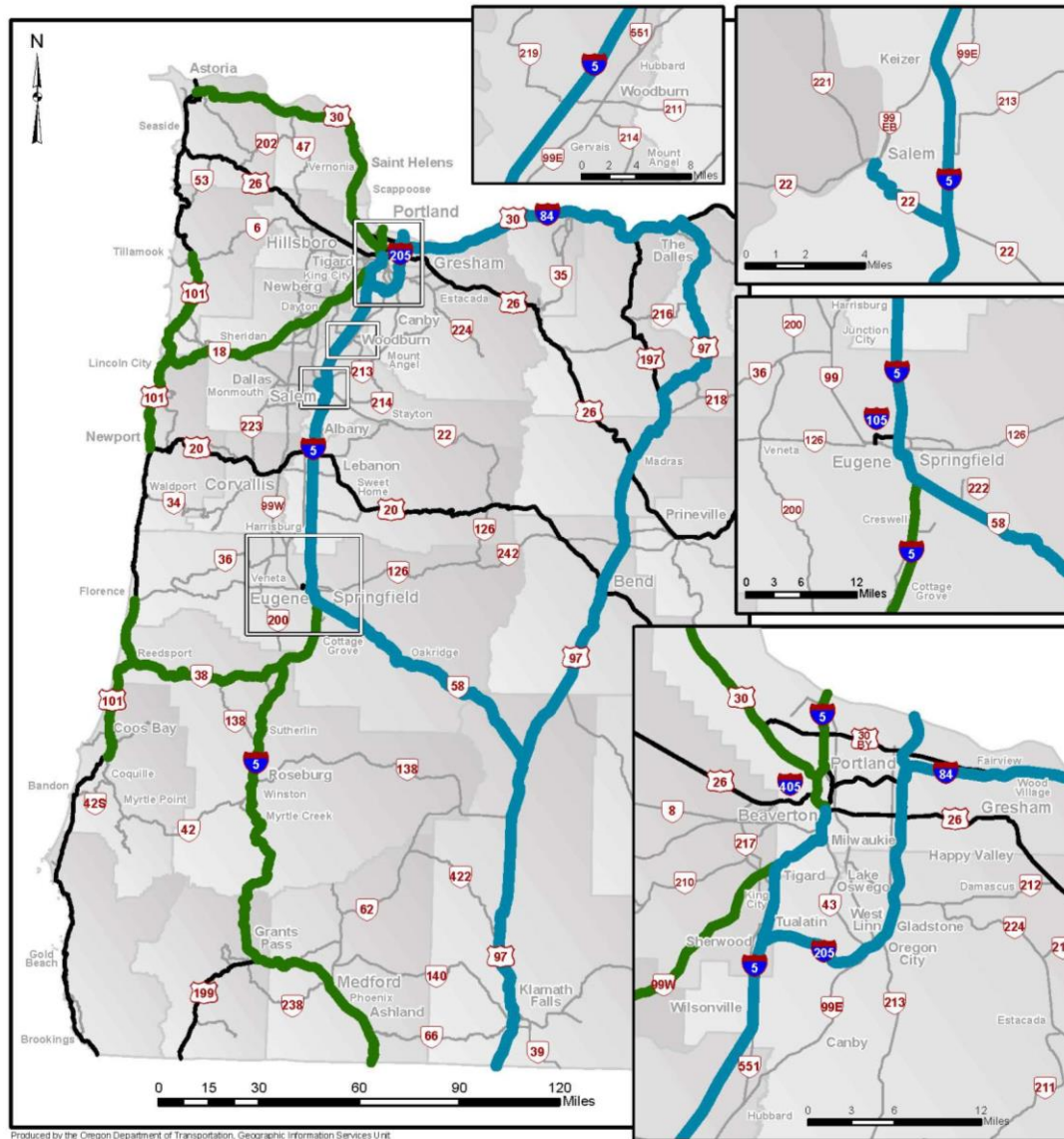


Tier 1 Route Map

\$900M

Priority 1

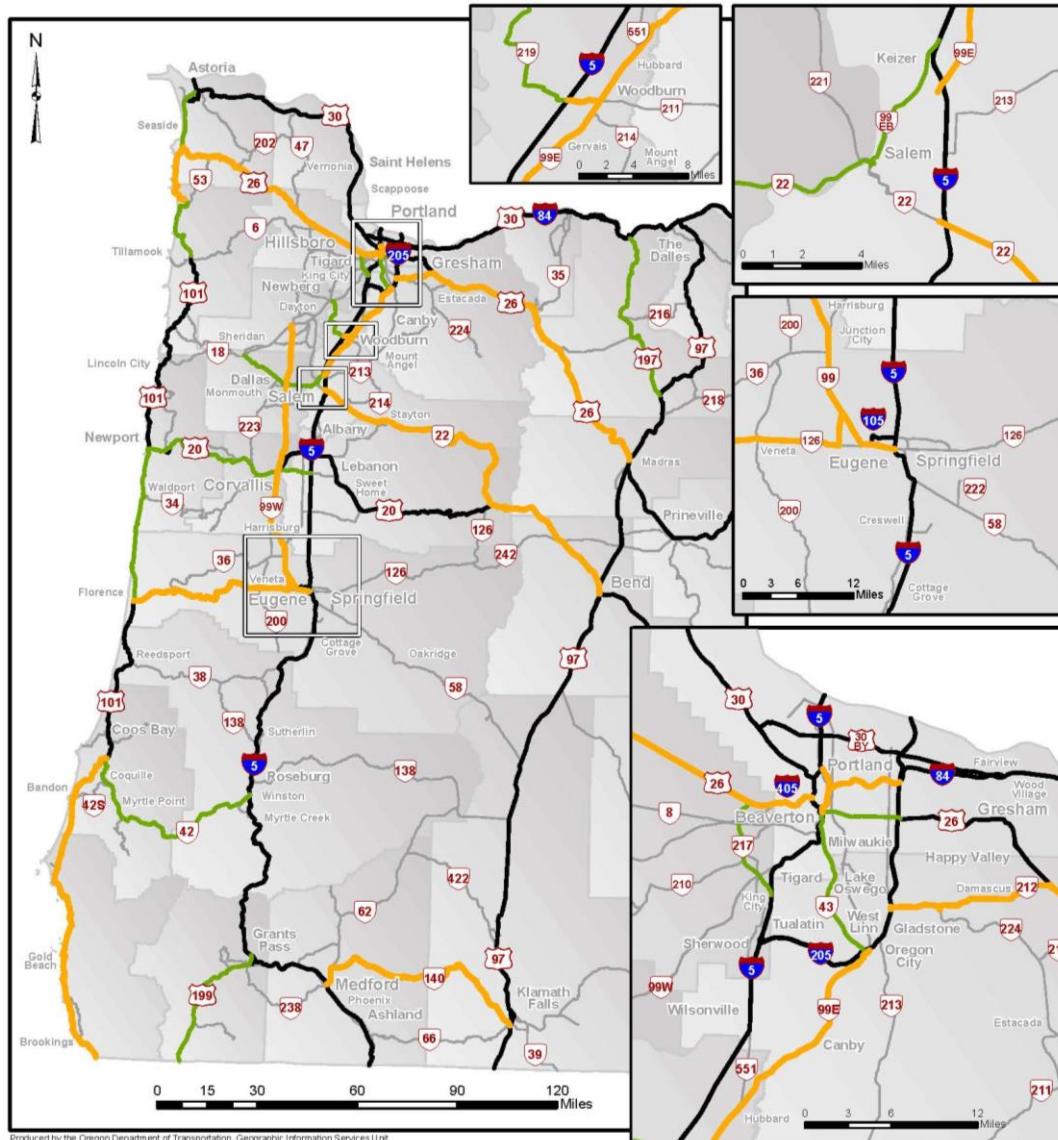
Priority 2



Tier 2 & 3 Route Map

Tier 2 –
\$600M

Tier 3 –
\$300M



Economic Damage in Oregon

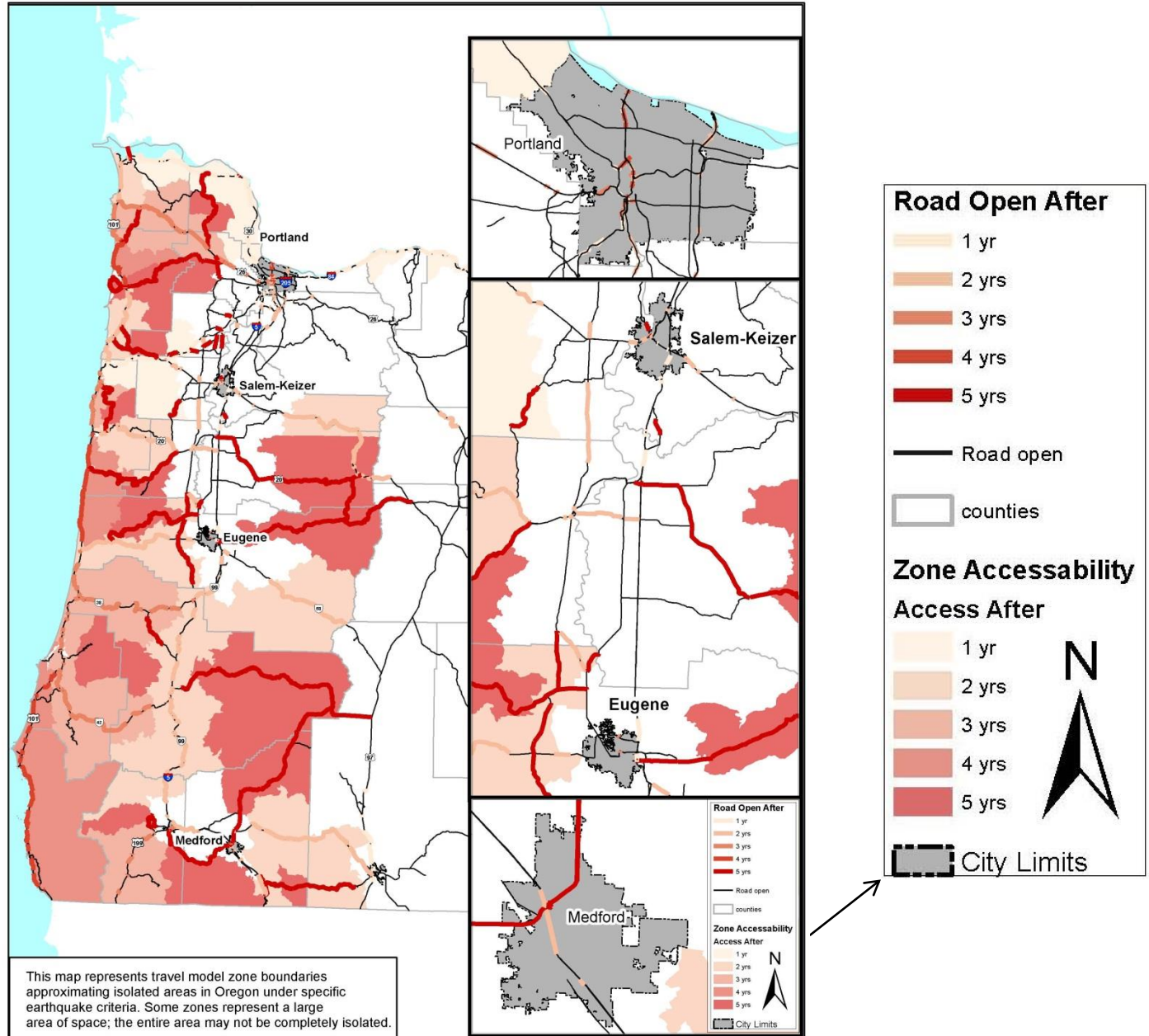
Damage to the highway system will result in **\$350B loss** in gross state product over 8-10 years.



Japan: before and after

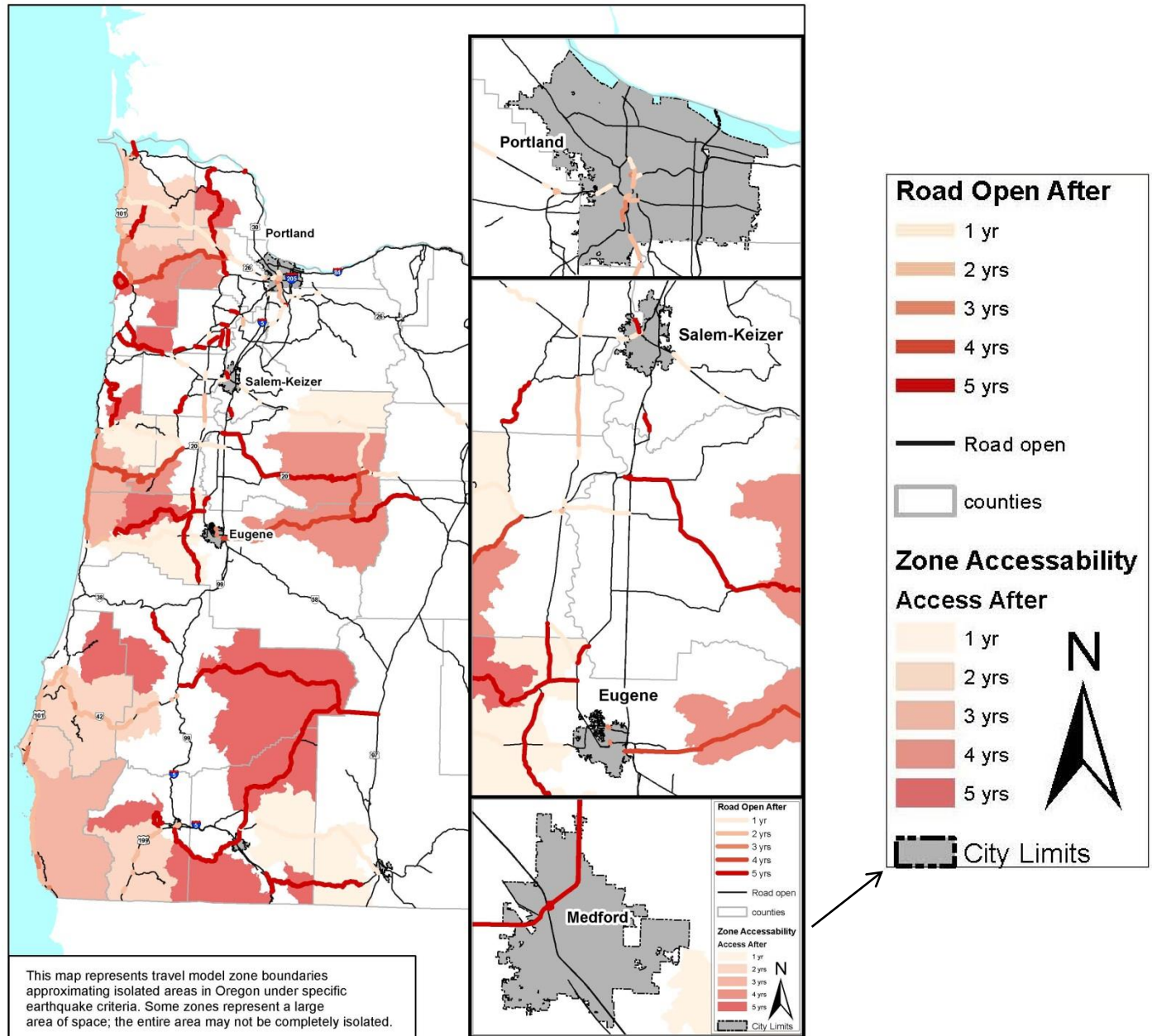
Major Seismic Event: Isolated Areas

Total
economic
loss: **\$350B**



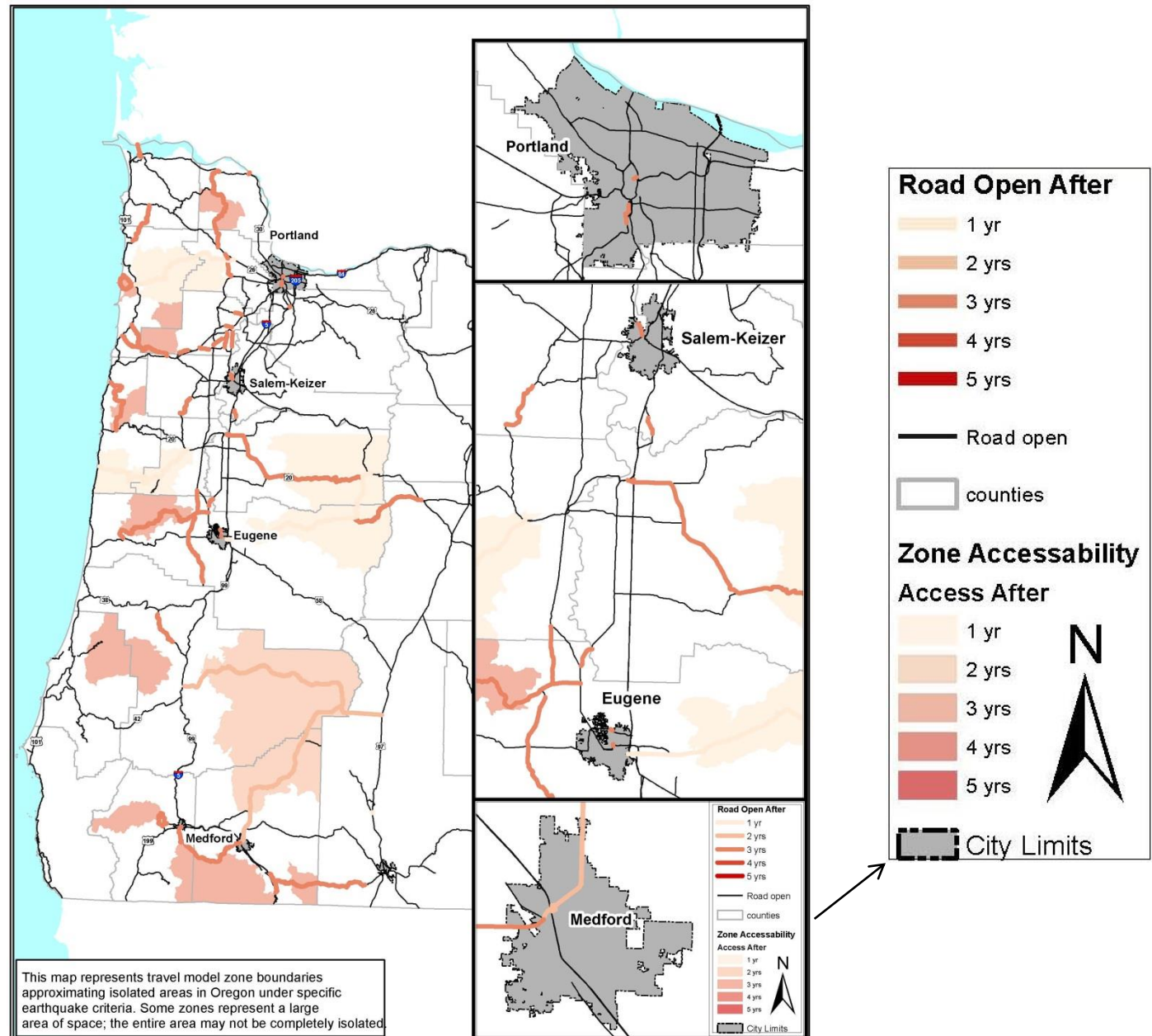
Isolated Zones: Stage 1 Scenario

Reduce
economic
loss by:
\$35B



Isolated Zones: Full Seismic Program

Reduce
economic
loss by:
\$84B



Rate of Return is 46:1

Total Cost	Stage 1	Stage 2	Stage 3
	\$0.9B	\$0.6B	\$0.3B

Total Program Budget = **\$1.8 Billion**

Benefit/Cost is 46/1

Total Economic Loss Avoided	Stage 1	Stage 2	Stage 3
	\$35B	\$20B	\$29B

Total Economic Losses Avoided = **\$84 Billion**

We Need to Start **Now**

Transportation is key to the overall response
California and Washington are ahead

- California: **5147 Bridges - \$13 billion**
- Washington: **416 Bridges - \$177 million**
- Oregon: **143 Bridges - \$44 million**

New Funding to Lifeline Routes

To avoid \$84B in economic losses and minimize loss of life: **Dedicate new funding to complete all 3 tiers by 2030.**



I-84 Sandy River Bridge



I-84 Sandy River Bridge



I-5 Willamette River Bridge (Eugene)