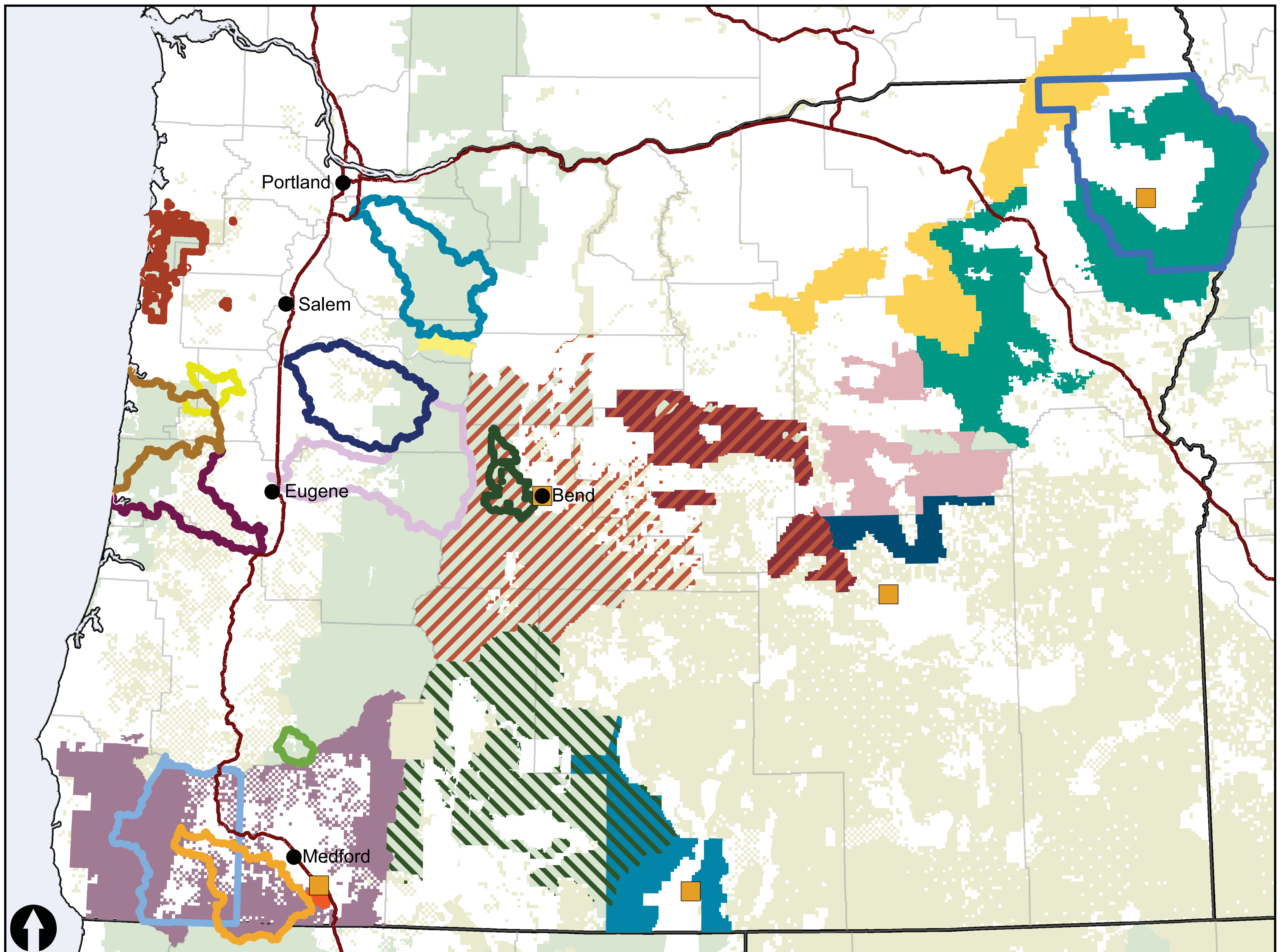


Multi-Stakeholder Forest Collaborative Groups Working on Public Lands, January 9 2013



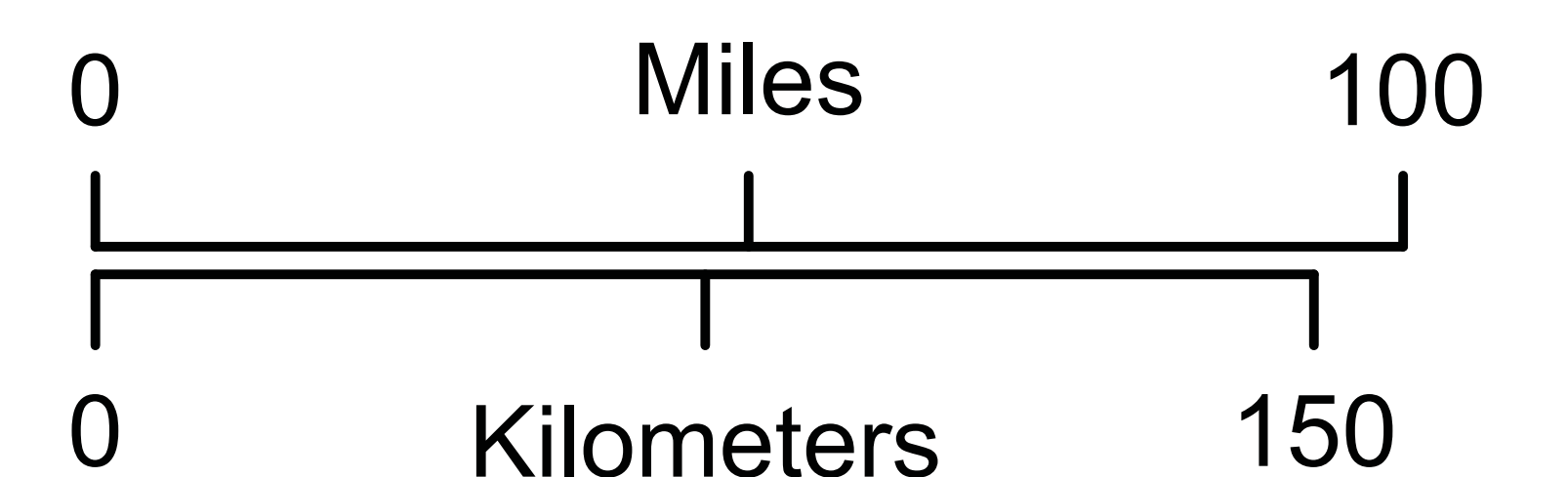
Data collected by EWP

Public lands collaboratives

- Ashland Forest Resiliency Stewardship Project
- Black Hills Collaborative Project
- Blue Mountains Forest Partners
- Central OR Partnerships for Wildfire Risk Reduction
- Harney County Restoration Collaborative
- Lakeview Stewardship Group
- North Santiam Forest Collaborative
- Ochoco Forest Restoration Collaborative
- Southern OR Forest Restoration Collaborative
- Umatilla Forest Collaborative Group
- Wallowa-Whitman National Forest Collaborative

All lands collaboratives

- Alsea Stewardship Group
- Applegate Partnership
- Clackamas Stewardship Partners
- Deschutes Collaborative Forest Project
- Hebo Stewardship Group
- Josephine County Stewardship Group
- Marys Peak Stewardship Group
- McKenzie Collaborative Group
- Siuslaw Stewardship Group
- South Umpqua Rural Community Partnership
- Sweet Home All Lands Collaborative
- Wallowa County NRAC



- Cities of over 50,000 people
- Community-based natural resource organizations
- Interstates
- BLM and other Federal lands
- US Forest Service lands