

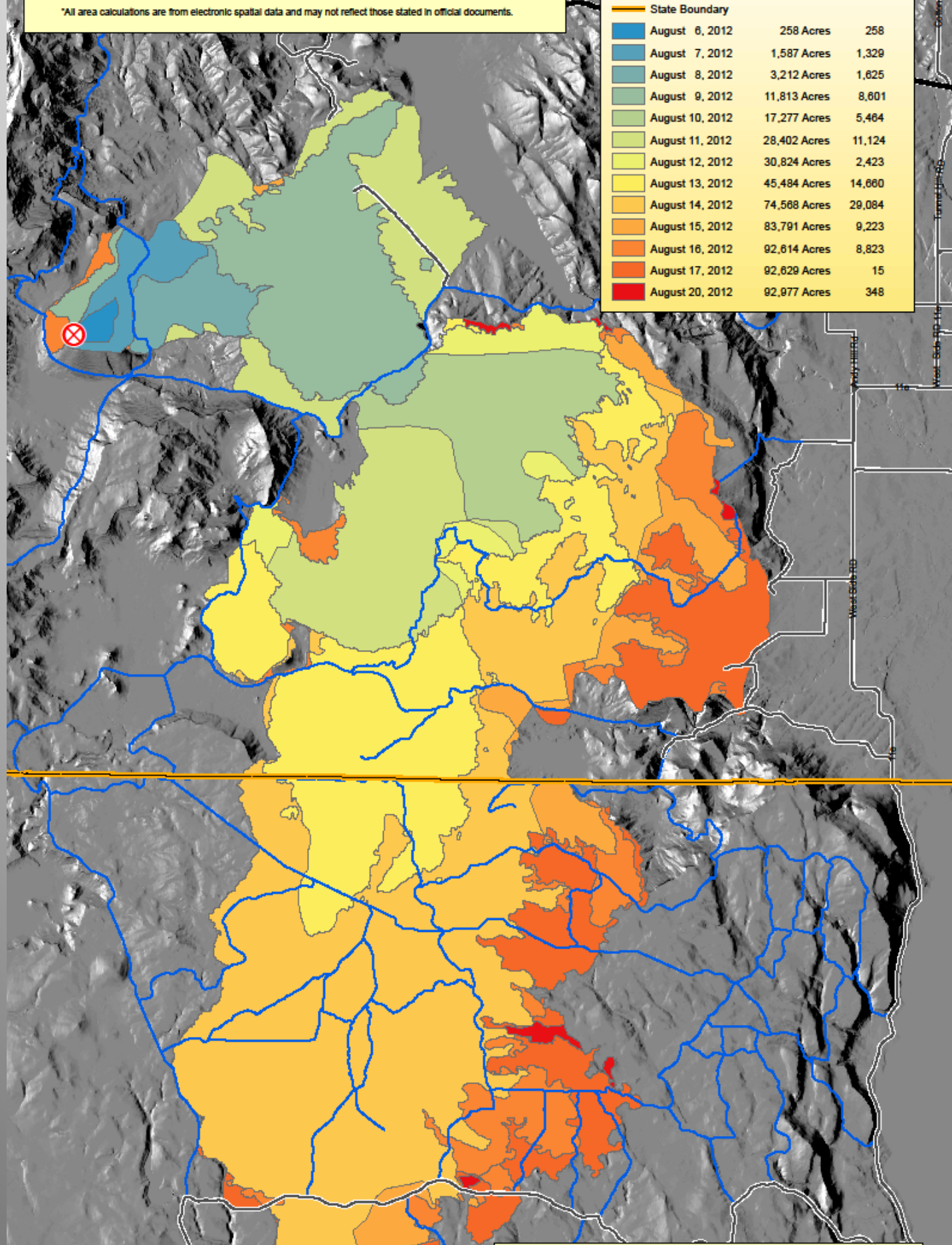
Corrected to show initial progression as August 6 rather than August 7 Clint Albertson

*All area calculations are from electronic spatial data and may not reflect those stated in official documents.

Major_fs_rds

State Boundary

August 6, 2012	258 Acres	258
August 7, 2012	1,587 Acres	1,329
August 8, 2012	3,212 Acres	1,625
August 9, 2012	11,813 Acres	8,601
August 10, 2012	17,277 Acres	5,464
August 11, 2012	28,402 Acres	11,124
August 12, 2012	30,824 Acres	2,423
August 13, 2012	45,484 Acres	14,680
August 14, 2012	74,568 Acres	29,084
August 15, 2012	83,791 Acres	9,223
August 16, 2012	92,614 Acres	8,823
August 17, 2012	92,629 Acres	15
August 20, 2012	92,977 Acres	348



Incident Objectives

- Protect private property and structures to minimize private landowner resource loss.
- Minimize acreage burned and damage to private property and improvements by safely and aggressively suppressing fire.
- Maintain and enhance the relationships with local landowners and the public. Additionally, all personnel assigned to the incident shall be treated with dignity and respect while providing a safe and productive work environment.
- Use aggressive outreach to insure timely and accurate dissemination of information regarding fire related activities is provided to the public, land owners, cooperators, elected officials, and other stakeholders.
- Ensure that relationships are maintained or enhanced with local land owners, business owners, the general public, and other key stakeholders.
- Utilize operational tactics that minimize impacts to private lands and structures, resource damage, economic impacts, and minimize the disruption to local activities and business where practical.

Recommendations

The following recommendations are issues that the Region may want to address as part of the Forest Service's continuing effort to improve operations:

- Work with ODF to clarify delegations of authority, joint operations, and supervision and evaluation of IMTs on fires that cross jurisdictions.
- Ensure that the Forest Service addresses how local knowledge of terrain, and environmental conditions as well as community and landowner communication can best be addressed by IMTs at the time they are ordered and throughout the duration of the fire.
- Establish procedures to ensure ongoing direct communications with individual landowners and permittees relative to future fire threats to their property and grazing allotments and suppression actions to mitigate those threats.
- Conduct a further review of the events that occurred when the fire burned across the Morris and Harvey properties and the Albertson's property; and evaluate the risk to the landowners and firefighters as the events occurred.